

# Enforcing Data Quality to Support Sustainability and Future AI Automation

Jennifer Weller  
Sr. Manager Enterprise Systems  
TE Connectivity  
May 2025

PLM Road Map™ & PDT North America 2025

*PLM's Integral Role in Digital Transformation From Strategy to Execution*

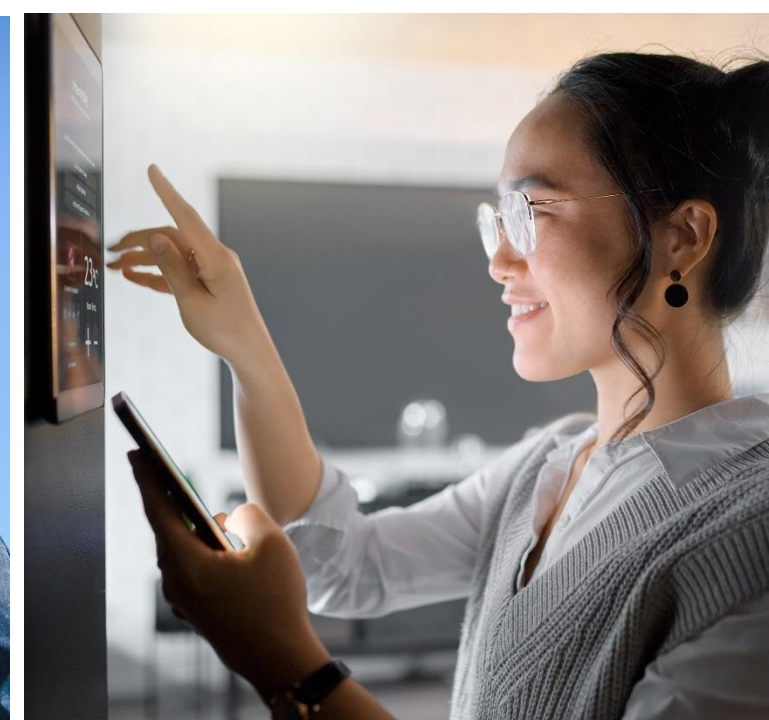
*Elevating PLM to an Enterprise Business Solution,  
the PLM Professional's Road Map to Success*

May 7 & 8

**CIMdata**

**europstep**

EVERY CONNECTION COUNTS



# WE CREATE A SAFER, SUSTAINABLE, PRODUCTIVE AND CONNECTED FUTURE.



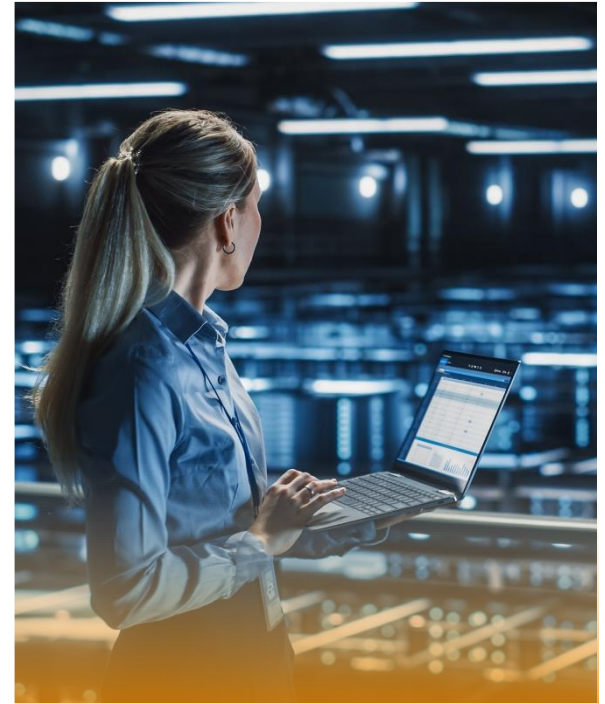
ADVANCING THE FUTURE  
OF TRANSPORTATION



INNOVATING FOR  
SUSTAINABLE ENERGY



MAKING FACTORIES  
AND HOMES SMARTER



ENABLING GLOBAL  
COMMUNICATION NETWORKS

# AT TE CONNECTIVITY, WE CREATE A SAFER, SUSTAINABLE, PRODUCTIVE AND CONNECTED FUTURE.

## BREADTH OF INDUSTRIES SERVED

### TRANSPORTATION SOLUTIONS SEGMENT

### INDUSTRIAL SOLUTIONS SEGMENT

Automation & Connected Living Sector\*

FY24 SALES  
**\$15.8B**

Sales figures by region have been rounded for presentation purposes.

**AMERICAS**  
**\$4.6B**

**EMEA**  
**\$5.9B**

**APAC**  
**\$5.4B**

**INDUSTRIAL TECHNOLOGY LEADERSHIP IN ~130 COUNTRIES**

	MANUFACTURING SITES	EMPLOYEES
AMERICAS	34	26,000
EMEA	39	35,000
APAC	27	26,000

Manufacturing sites presented represent principal centers of manufacturing

**PRODUCT CATEGORIES**

CONNECTORS	SENSORS	SEALING + PROTECTING	TUBING	PRECISION WIRE & CABLE	RELAYS	APPLICATION TOOLING	EMI & EMC SOLUTIONS
<b>235B</b> PRODUCTS MANUFACTURED		<b>\$740M+</b> INVESTED IN RESEARCH, DEVELOPMENT & ENGINEERING			<b>9K</b> ENGINEERS GLOBALLY		<b>15K+</b> PATENTS GRANTED OR PENDING

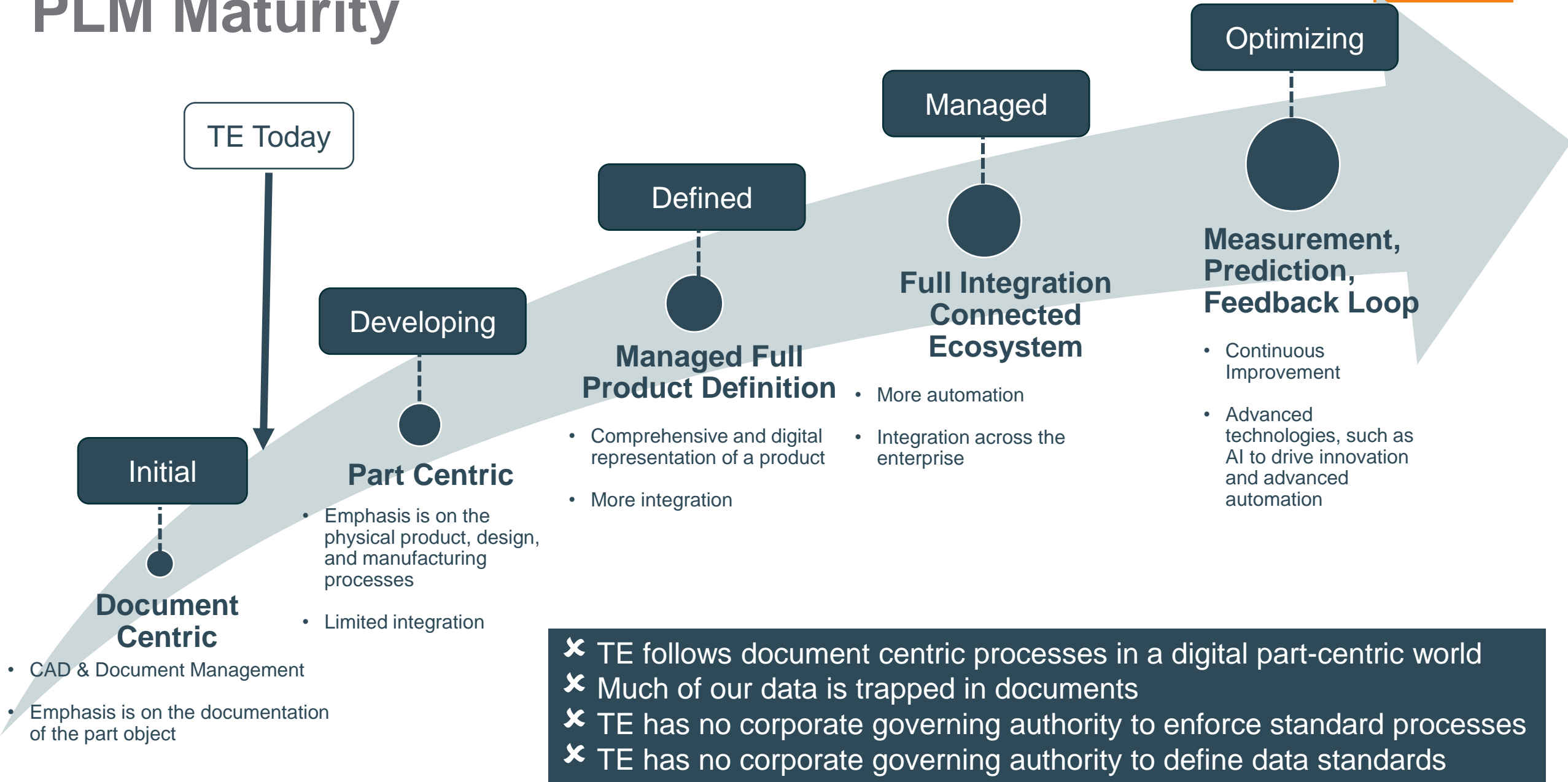
All figures FY24 \* Channel part of Automation & Connected Living Sector. Channel supports all industries.

# The Challenges of Supporting Diverse Industries



- Business unit and functional silos lead to disjointed processes across the enterprise
- Business units must follow requirements specific to their industry
- There are few common processes across the business units – no “one size fits all”
- Data is trapped in local systems or documents stored in local file stores

# PLM Maturity



# Catalyst for Change: Making Product Data a Strategic Asset

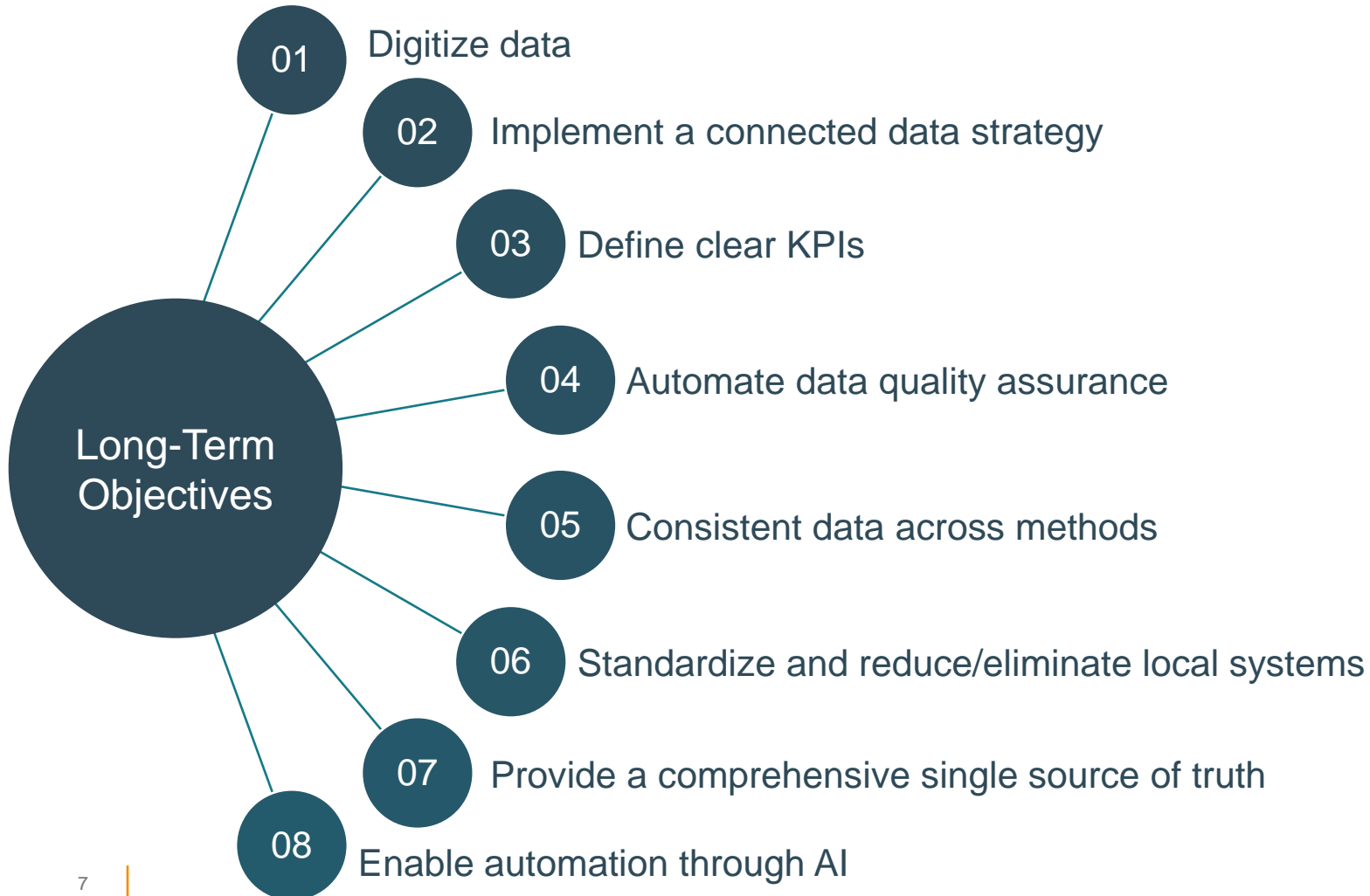


Data that is fragmented, incomplete or inaccurate, and not digitally connected....

- ✗ Limits potential for automation and optimization of the product development process
- ✗ Slows our response to regulation changes
- ✗ Impacts the benefit of AI

# Getting our Digital House in Order

A year from now you may wish you had started today! ~ Karen Lamb

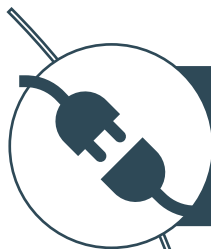


### Workstreams

- **Golden Product Record**  
Define the single source of truth of a product
- **Product Data Validation**  
Ensure accuracy, consistency, and completeness of data upon product release

# Golden Product Record

- Define the required and recommended engineering documents and data to be associated to part numbers
- Define the master system to manage the documents and data
- Create a single global policy
- Define KPIs and Validation Rules
- Incorporate Validation Rules into Release Processes
- Enforce Policy and Processes
- Meter Progress



When associations are created and managed properly, data quality is improved and flows across systems improving...



Findability, Traceability, Predictability, Reliability, and Efficiency



Improving the User Experience throughout the Product Lifecycle



Enabling and accelerating TE's objectives for applying AI & ML

# Integrating Data Quality and Data Governance



## People

BU Assigned Data Stewards

## Process

BU Product Data Stewards

- Map out processes and procedures to understand how data is managed from cradle to grave
- Define what good data looks like and puts rules and regulations in place
- Enforce data validation rules
- Identify root cause of invalid data
- Oversee remediation of invalid data

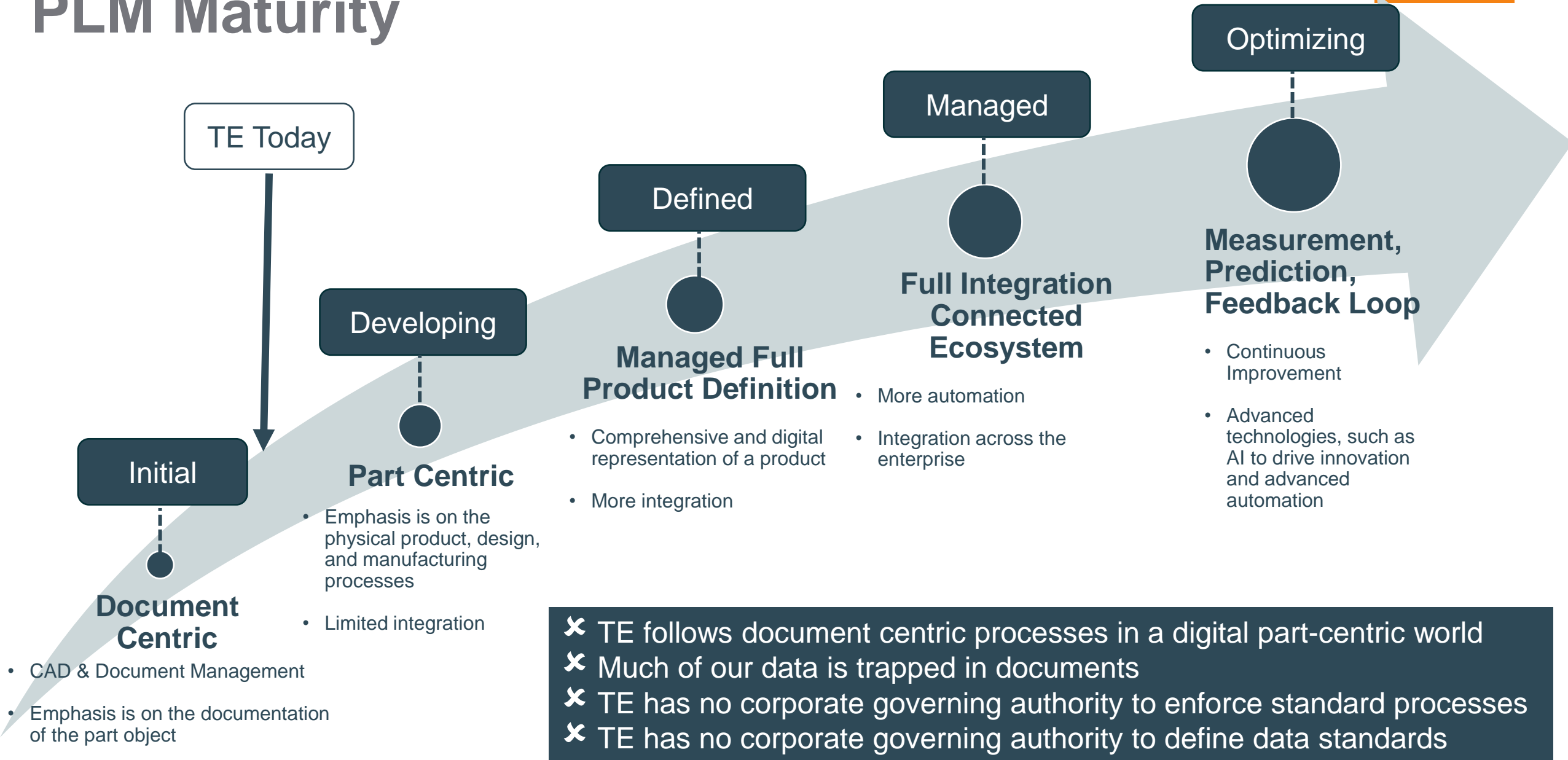
## Technology

- System enforced accuracy and completion of released product data
- System enforced Golden Product Record data elements

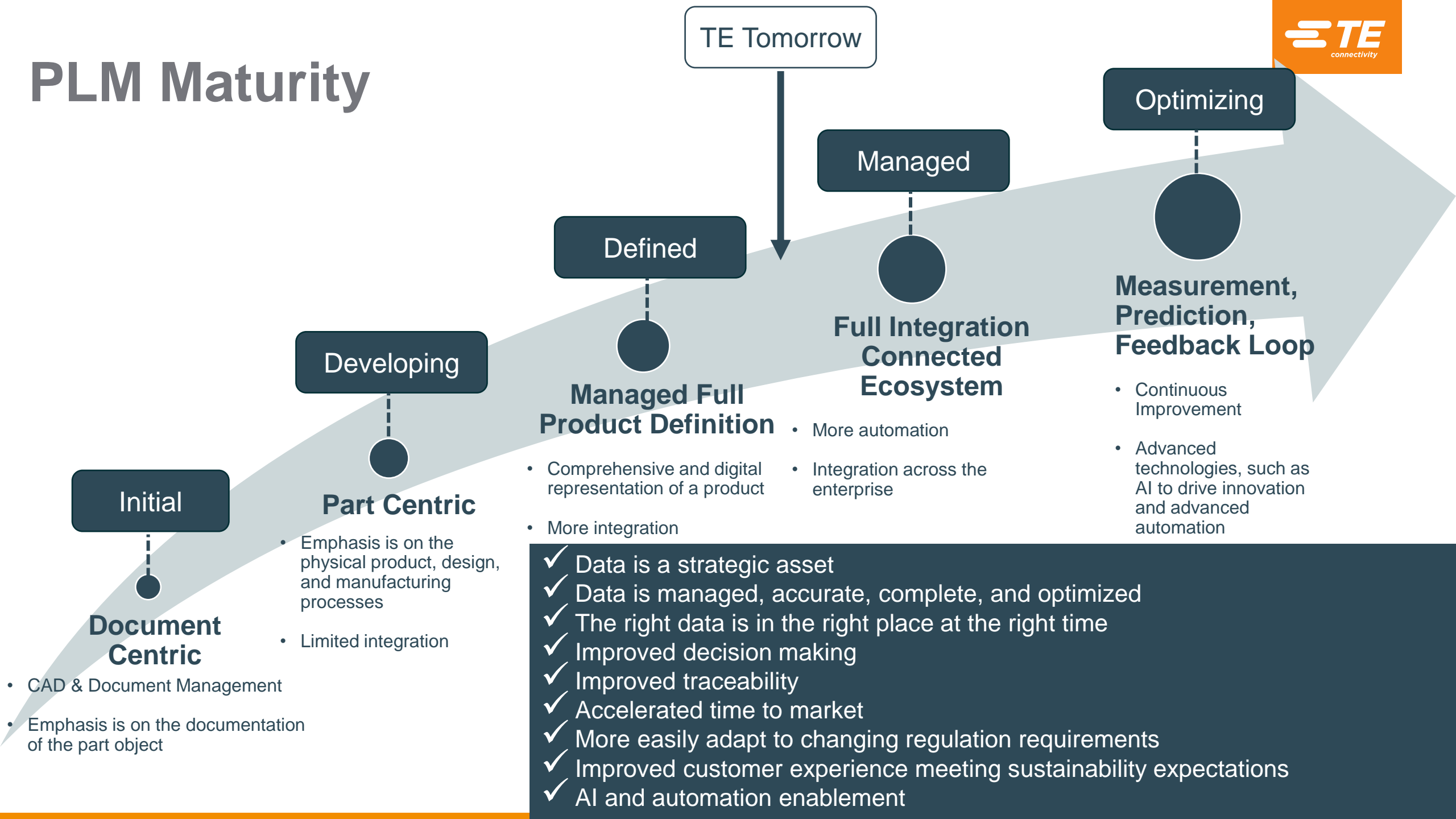
# Keys to Success



# PLM Maturity



# PLM Maturity



TE Tomorrow

Optimizing

Managed

Defined

Developing

Initial

**Measurement, Prediction, Feedback Loop**

**Full Integration Connected Ecosystem**

**Managed Full Product Definition**

**Part Centric**

**Document Centric**

- Continuous Improvement
- Advanced technologies, such as AI to drive innovation and advanced automation

- More automation
- Integration across the enterprise

- Comprehensive and digital representation of a product
- More integration

- Emphasis is on the physical product, design, and manufacturing processes
- Limited integration

- CAD & Document Management
- Emphasis is on the documentation of the part object

- ✓ Data is a strategic asset
- ✓ Data is managed, accurate, complete, and optimized
- ✓ The right data is in the right place at the right time
- ✓ Improved decision making
- ✓ Improved traceability
- ✓ Accelerated time to market
- ✓ More easily adapt to changing regulation requirements
- ✓ Improved customer experience meeting sustainability expectations
- ✓ AI and automation enablement

# Thank you!

**Jennifer Weller**

*Sr. Manager Enterprise Systems  
TE Connectivity*

<https://www.linkedin.com/in/jennifer-weller-00634610/>

**EVERY CONNECTION COUNTS**

