

PLM Road Map™ & PDT North America 2024
Value Drivers for Digitalization of the Product Lifecycle
Insights for the PLM Professional—Why the investment, what are the returns, and how are they achieved?
May 8 & 9

CIMdata *-eurostep-*

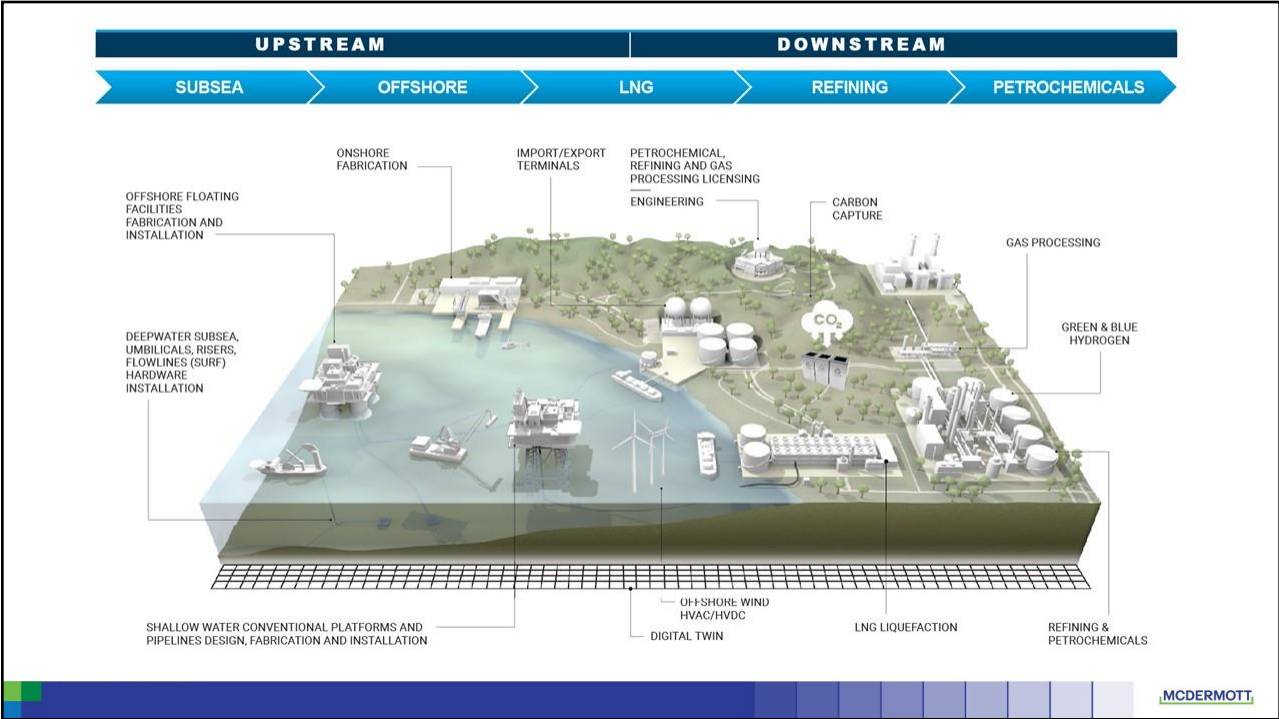
Adapting PLM to the World of Major Infrastructure Projects

Jeff Stroh
Sr. Director Digital & Information Management Systems

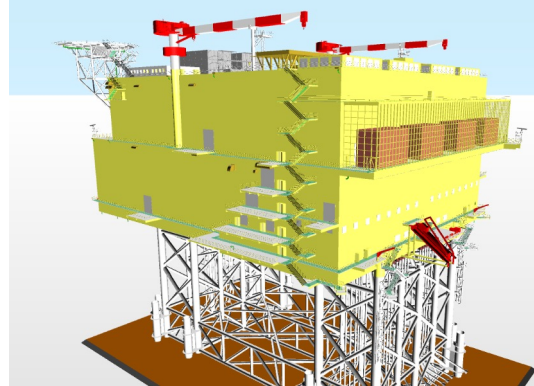
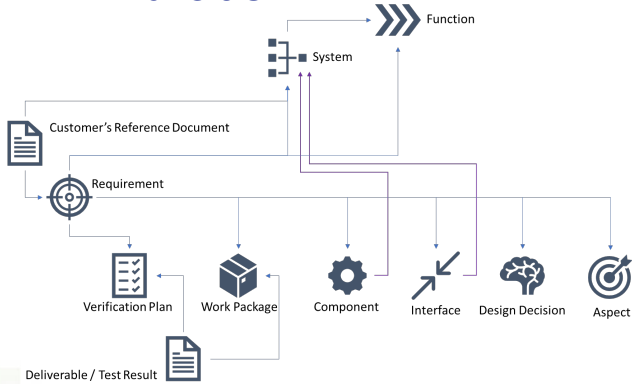


MCDERMOTT

BUILDING ENERGY'S FUTURE.



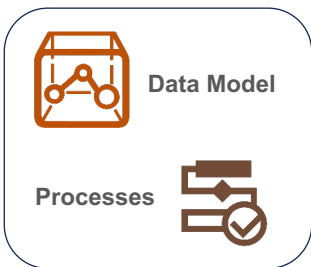
Opportunity in Energy Transition



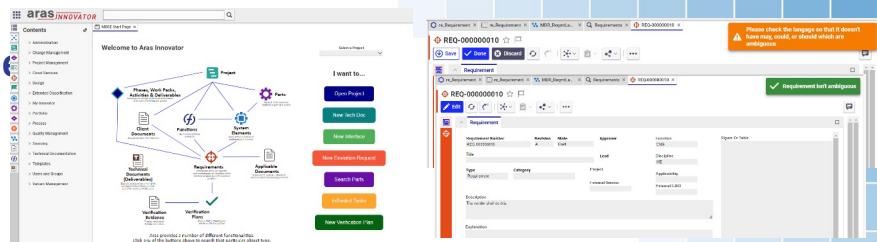
Energy Transition customers are not beholden to the traditional “oil & gas” way of doing projects. This opens the door for MBSE and a more “product” approach as the need for ET will rely on a higher level of standardization and modularization than oil & gas.

McDERMOTT

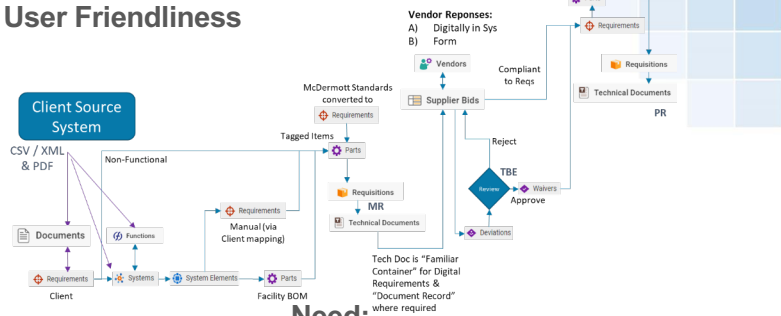
What do we need



- Need:**
- High Level of Flexibility
 - Delivered Quickly
 - Open Architecture to Build Interfaces



Need:
User Friendliness

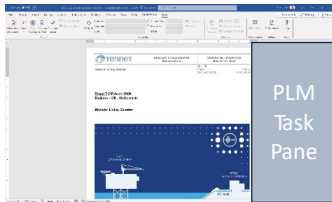


Need:
RM & SE ++++++

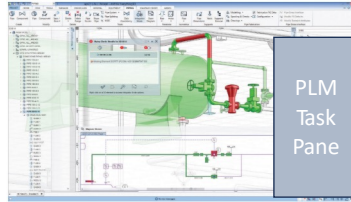
McDERMOTT

Data Needs to be... Accessible Everywhere

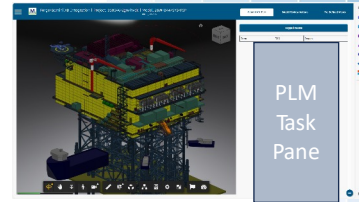
1D Applications



2D Applications



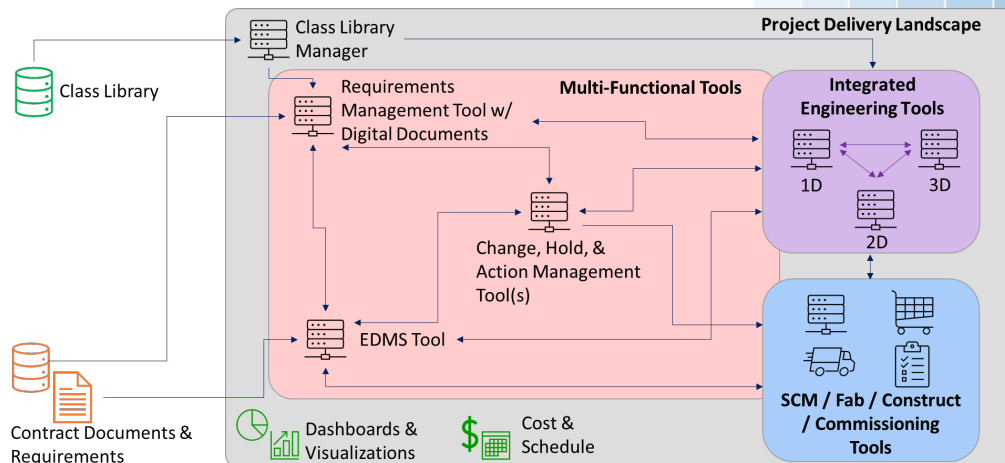
3D Applications



Data needs to be 1) available and 2) useable in project delivery applications to maximize the benefits we get from the solutions.

- Reduce friction to do work and find answers
- Drive collaboration and visibility across tools, functions, and disciplines
- Don't interrupt the current workflow, augment it

Project Architecture (getting closer to Utopia)



Lighthouse Collaboration with AVEVA & Aras is driving forward our vision for "utopia"

Thank you!

Jeff Stroh

*Sr. Director, Digital & Information Management Systems
McDermott, Inc.*

www.linkedin.com/in/jeffstroh

MCDERMOTT



**BUILDING
ENERGY'S
FUTURE.**