



PRO.FILE
from  revalize

AI in PLM

Cutting Through the
Hype to Real Business
Value

Dr. Philipp Uscharewitz
Global Director Partnerships





30%

AI projects abandoned after PoC (Gartner)

poor data quality | risk controls | cost | unclear value

Hype

Fully
autonomous AI

AI replaces
engineering
judgement and
expertise

One Copilot
solves every
workflow

Data quality
doesn't matter

VS

Real Value

Faster access
to product
knowledge

Semantic
search across
complex PLM
data

Reduce
repetitive
manual work,
improve quality

BOM /
document
automation



**AI is an accelerator for
productivity and access to
knowledge,
not a magic bullet or a
replacement for process
discipline**

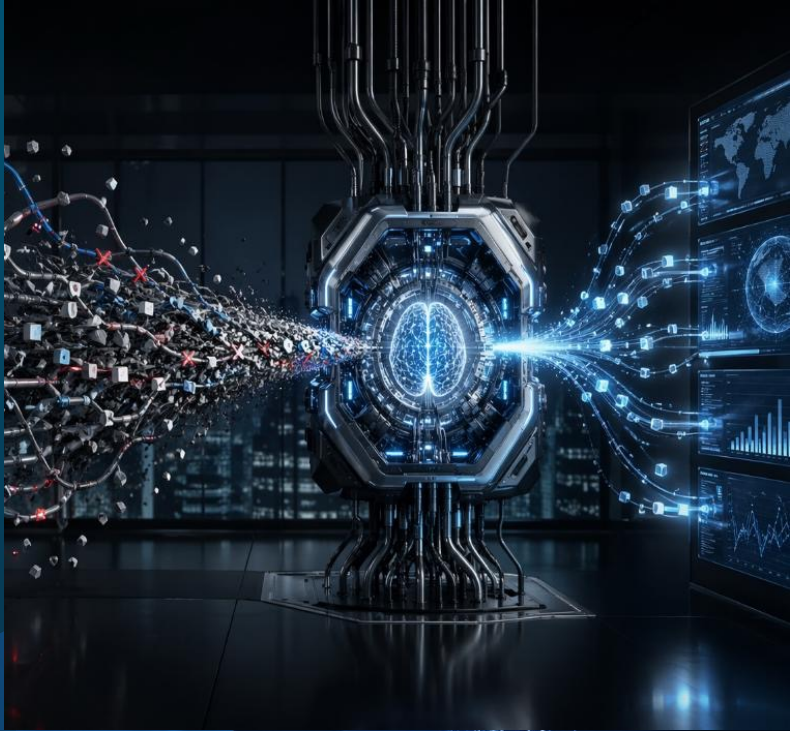
The foundation for useful AI and its challenges

AI only delivers reliable value with clean data

Data quality requires continuous maintenance

Connected data creates value even without AI

Poor data quality leads to rework, delays, and low trust in AI



**The bottleneck is not AI
but data quality
and
connected data**

Security, Control & the Hybrid Future

Security remains the core requirement

Cloud enables speed and scale; On-prem offers greater control

AI must not only perform, but also be trusted, controlled, and explainable.

Hybrid is the most realistic model
–
on prem data with cloud functions



**Hybrid is the most realistic
model for industrial AI**

**It combines innovation with
control**

Key Takeaways

Start with a use case not the technology

No trusted data no reliable AI

Bad data limits AI before it starts

Hybrid is the practical industrial path





revalize



PRO.FILE PLM is not the AI model.

It is the no-code configurable multi-CAD PLM layer where AI can be applied to real engineering workflows