

PLM Road Map™ & PDT North America 2026

AI in PLM: A Disruptive Opportunity and Challenge

Turning AI disruption into enterprise value:

Strategic insights for the PLM professional

6-7 May 2026

CIMdata®

www.CIMdata.com

AI OVERVIEW

windchill® ai

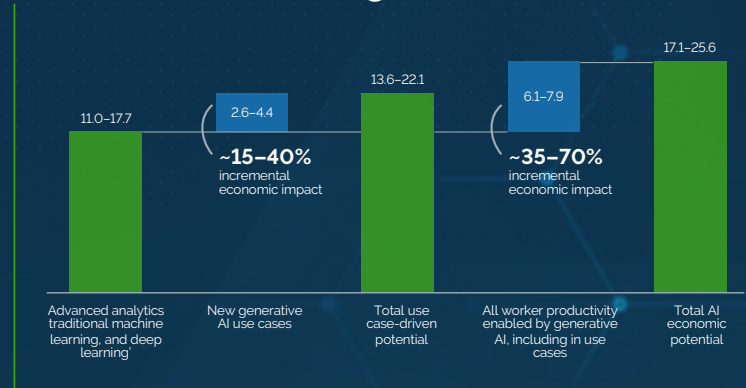
Todd Bowolick

Director – Customer Success

Copyright 2026 All Rights Reserved

AI IS A COMPETITIVE ADVANTAGE FOR MANUFACTURERS

The AI market is \$17.1 – 25.6 trillion with GenAI accounting for 15-40%



McKinsey 2023

55% of product and manufacturing companies state AI is their #1 strategic priority for the next two years

IDC 2025

70% of the companies we surveyed acknowledged the need for a strong data foundation when trying to scale AI"

Accenture 2025

A FRAMEWORK FOR AI MATURITY

- Advise users by answering questions, summarizing content, retrieving information

Advise

- Efficiency** - Reduce time spent searching fragmented data while increasing access to domain knowledge across teams. Unlock the value of organizational knowledge to inform decisions earlier and more accurately.

Assist users by executing some tasks automatically with humans in the loop

Assist

Process optimization - Minimize repetitive tasks and manual rework while improving the quality and consistency of outputs. AI assistance raises the floor on content quality and enhances engineering throughput.

Automate full workflows with little or no human input

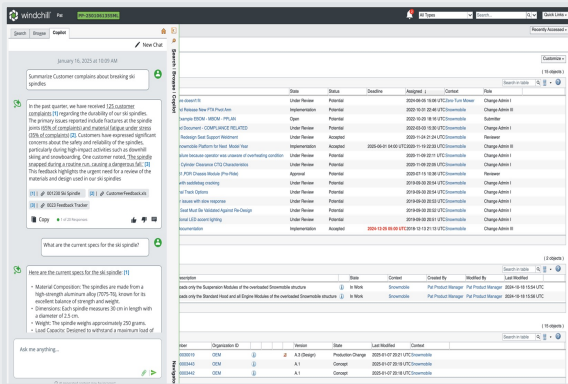
Automate

Scaling impact - Automate complex engineering workflows at scale, not just to save time, but to institutionalize quality for core operations such as change management, traceability analysis, and compliance reviews

AI AND WINDCHILL

AI That Connects Data, Decisions, and Execution Across the Digital Thread

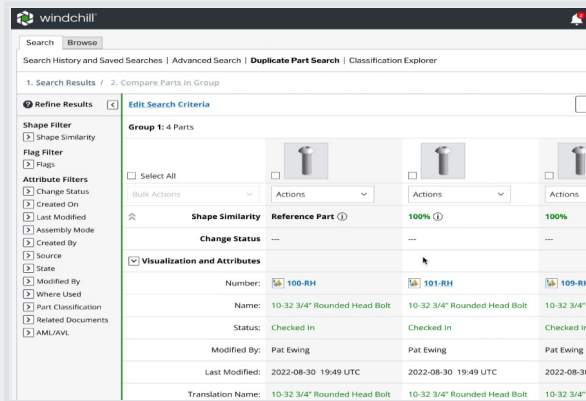
Windchill AI Assistant



Natural Language Processing and LLM with documents-based product knowledge:

- Leverage AI Agentic approach
- Secure and compliant with Windchill access & Business Rules

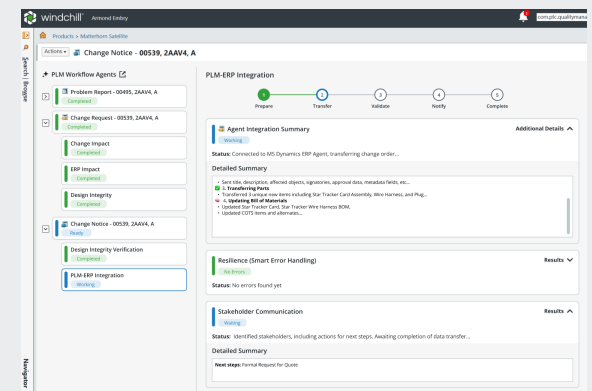
Windchill Part Re-use



AI assisted duplicate part identification and resolution

- Duplicate Part Detection using 3D and metadata
- Integrated Change Management to resolve duplicates

Agentic Digital Thread



Expansion of Windchill Domain Agents

- Change Management
- Part & BOM
- Manufacturing Planning
- Agent to Agent interaction across PTC Portfolio





SCAN THE QR CODE!

Please give me feedback
on my presentation!



THANK YOU

ptc.com

