



1

Tingo Pucará

Water source

point
Life | lain
living be
existe

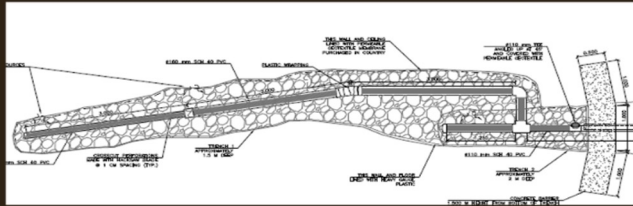
5

5

2



INTAKE

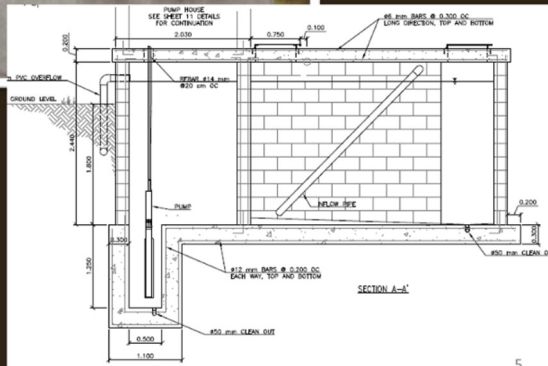


4

3







SED/PUMP TANK



5

4

 **PIPELINE & ELECTRICITY**



6

5

 **STORAGE TANK**

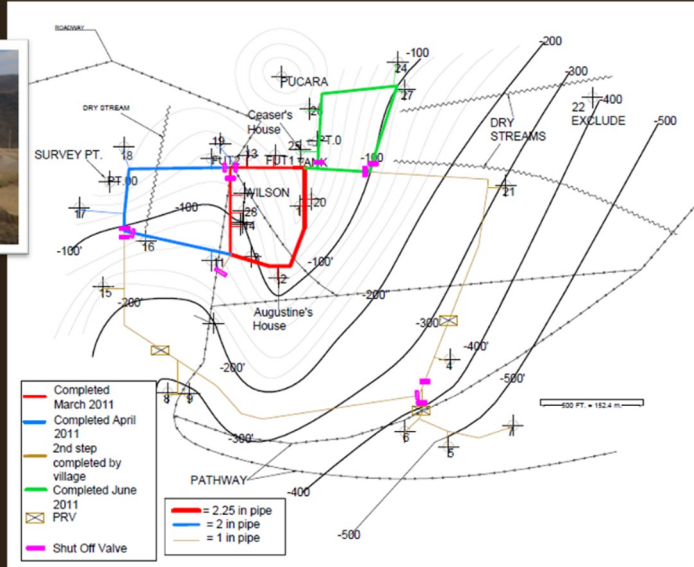


7

6



DISTRIBUTION



8

7

After 20 years of experience, EWB-USA is the largest mobilizer of the engineering community - *professional and student* - in the country...

...for **impact** around the globe!

230+ chapters - over half are students!

14,000+ volunteers

\$5.6M Organization

Water, Structure, Sanitation, Agriculture, Civil, Energy, and others...



8

EWB USA's dual mission

Build Leaders

4,000 new global engineers every year

Unparalleled **interpersonal skills**, an unmatched **global awareness**, and a **leadership-drive**.

Deliver Impact

500 projects every year - domestically and internationally - impacting more than **1.6 million people**.

9

International Development for the most underserved communities

37
COUNTRIES

29
U.S. STATES & TERRITORIES



- 1,000+ community projects and counting: U.S. domestic (30%) and Internationally (70%)
- Project process oversight: P.E.'s, country-offices and in-country partners, and strong corporate partners
- Professional, rigorous evaluation of our work: over 85% survival rate, better than industry average

10

EWB-USA is one of 26 EWBs worldwide

The image features a world map with 26 regions highlighted in blue. A key in the bottom left corner indicates that blue regions are 'Already linked to EWB International' and light blue regions are 'EWB exists/setting up'. To the right of the map is a screenshot of a social media post from 'INDUSTRIAL AUTOMATION MAGAZINE'. The post title is 'Engineers Without Borders launches strategic partnership with Bentley Systems'. The main text reads 'A momentous partnership' and 'A new partnership to advance engineering for good'. Below this is a graphic with the text 'ENGINEERS WITHOUT BORDERS' and the Bentley logo. The post shows engagement from 'You and 6 others' with 2 comments and 1 repost.

11

Reframing the problem,

from "out there"
to "within"



12

Greenwood Cemetery

Est. 1874

Aspire
PAVER PRODUCTS POPULAR APPLICATION

American Chemistry Council

The image shows a construction site for a path at Greenwood Cemetery. The path is made of gravel and is surrounded by trees and grass. An inset photo shows a wider view of the site. Overlaid on the image are the Aspire logo and the American Chemistry Council logo.

13

Wholehearted Engineering

- **Personal commitment and accountability**
- **Curiosity and courage**
- **Investing in people**
- **Humility**

The graphic features a blue and white background with diagonal stripes. The text 'Wholehearted Engineering' is on the left, and a vertical list of four values is on the right, each preceded by a blue circle.

14

