

Systems Engineering KC

Systems Engineering Knowledge Council Workshop

A CIMdata PLM Foresight Event
24 June 2014—Cincinnati, Ohio USA

John MacKrell, VP & Systems Engineering Council Lead
j.mackrell@CIMdata.com
+1.734.668.9922

CIMdata | Global Leaders in PLM Consulting
www.CIMdata.com

Copyright © 2013 by CIMdata, Inc.

SE Survey

Summary results of initial systems engineering survey (1 of 2)

- Even though many companies have a systems engineering strategy in place it is not applied consistently
- Systems engineering is a fragmented practice and not consistently part of companies' product development approach
- General lack of requirements change tracking
- Lack of formal, tool-supported requirements definition, decomposition, allocation and association
- Low level of systems engineering maturity that is reported throughout the survey, particularly since many respondents are INCOSE members

 **CIMdata**

Copyright © 2014 by CIMdata, Inc.

 2

Systems Engineering KC

SE Survey

Summary results of initial systems engineering survey (2 of 2)

- The benefits identified are not surprising, especially when compared to what CIMdata has been hearing from its industrial clients for some time



CIMdata

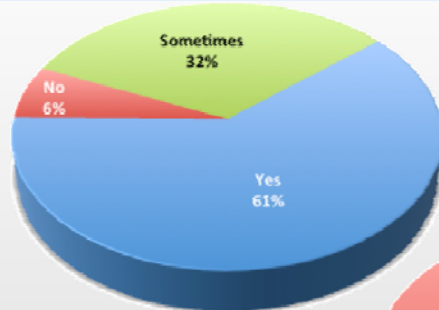
Copyright © 2014 by CIMdata, Inc.



3

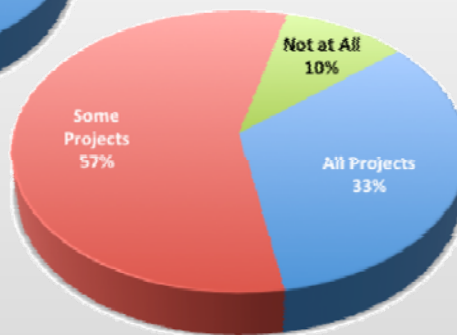
SE Survey—Selected Results

Summary results of initial systems engineering survey



Systems Engineering Strategy
is Applied to Projects

Systems Engineering Strategy
is Always Used for Projects



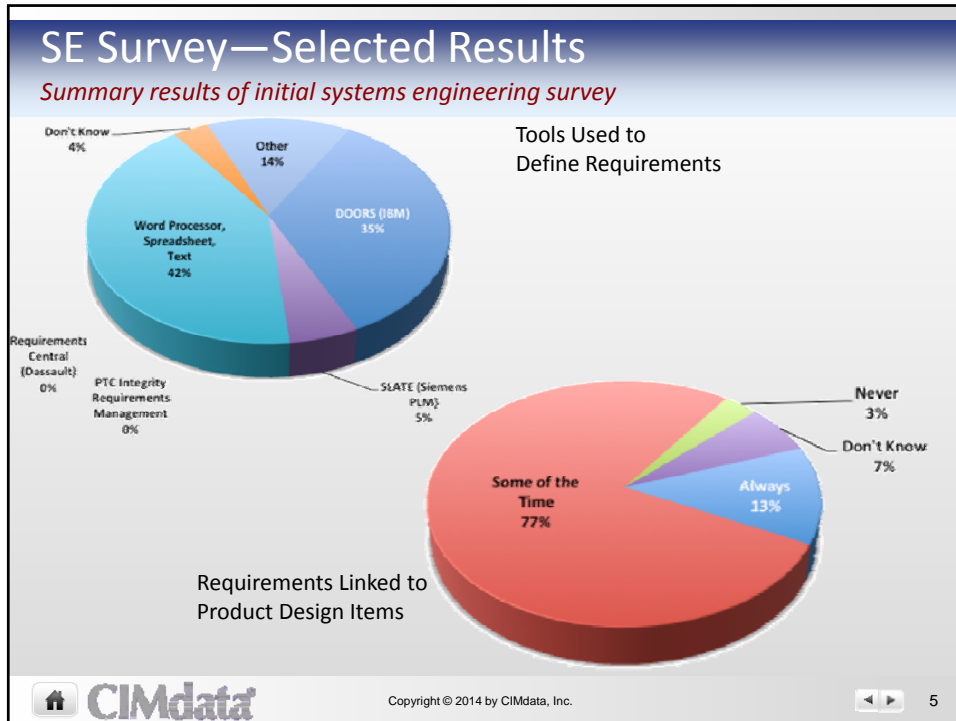
CIMdata

Copyright © 2014 by CIMdata, Inc.



4

Systems Engineering KC



Be Counted!

Your participation will help you and the community

- If you would like to participate in this or future systems engineering surveys send an email to:
- J.mackrell@cimdata.com
- You will receive a summary of results from any survey in which you participate

CIMdata Copyright © 2014 by CIMdata, Inc. 6

Systems Engineering KC

Work Session:

Driving future systems engineering research surveys

- Potential survey topics...
 - Explore peoples' understanding of the difference between systems engineering and MBSE and how they apply MBSE.
 - Gather more detail about systems modeling tools and systems modeling languages and how these are applied to various domains.
 - Capture quantifiable benefits received in terms of monetary and countable items benefits.
 - Investigate how people are decomposing and allocating requirements.
 - Gather a deeper understanding of how requirements are validated and at what points in the design process this is done.
 - ????



CIMdata

Copyright © 2014 by CIMdata, Inc.



7

Work Session:

Driving future systems engineering research surveys

- Potential survey topics...



CIMdata

Copyright © 2014 by CIMdata, Inc.



8

Systems Engineering KC

Wrap Up: What We Heard

- Matt Loew:
- The panel:
- David Long:
- David Feng:



CIMdata

Copyright © 2014 by CIMdata, Inc.



9

CIMdata

Strategic consulting for competitive advantage in global markets



World Headquarters

3909 Research Park Drive
Ann Arbor, MI 48108 USA
Tel: +1.734.668.9922
Fax: +1.734.668.1957

Main Office - Europe

Oogststraat 20
6004 CV Weert, NL
Tel: +31 (0) 495.533.666

Main Office - Asia-Pacific

Takegahana-Nishimachi 310-31
Matsudo, Chiba 271-0071 JAPAN
Tel: +81.47.361.5850
Fax: +81.47.362.0472

www.CIMdata.com

Serving clients from offices in North America, Europe, and Asia-Pacific



CIMdata

Copyright © 2014 by CIMdata, Inc.



10