

MOOG

PLM Visual Mapping

A Framework for Architecting Change

PLM Road Map™ & PDT North America 2024
Value Drivers for Digitalization of the Product Lifecycle
Insights for the PLM Professional—Why the investment, what are the returns, and how are they achieved?

CIMdata May 8 & 9 **-eurostep-**

Dan Gladysz
PLM Business Architect

Shaping the way our world moves™

Moog At-A-Glance

Shaping the way our world moves™

World leader in high-performance motion control solutions for mission-critical applications

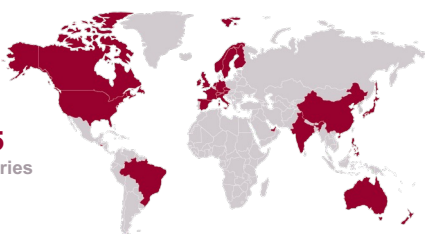
1951
Founded by Bill Moog

14,000
Employees

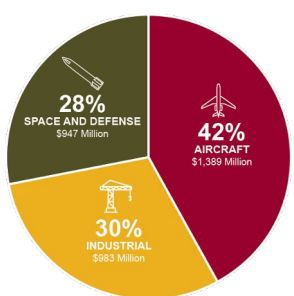
\$3.3 B
FY 2023 Revenue

70+ YEARS
Controls Heritage

25
Countries

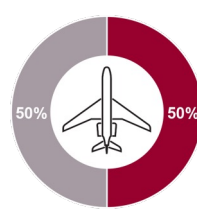


FY 23 Revenue

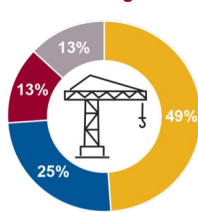


Segment	Percentage	Revenue (Million)
Aircraft	42%	\$1,989
Industrial	30%	\$953
Space and Defense	28%	\$947

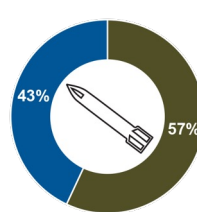
Business Segments



- Military Aircraft
- Commercial Aircraft



- Industrial Automation
- Medical
- Energy
- Simulation and Test



- Defense
- Space

2

Workforce

MANUFACTURING: 48%



ENGINEERING: 32%



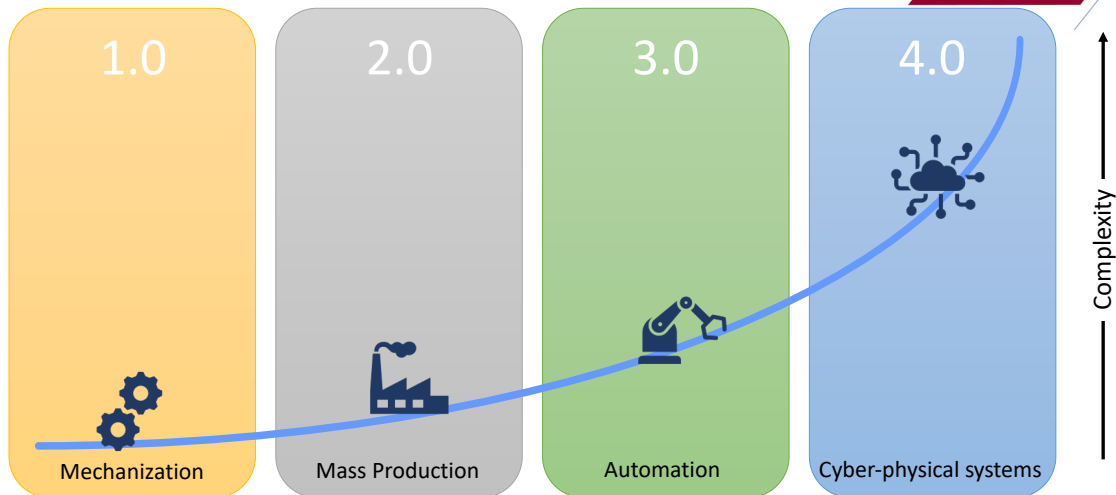
SALES / MARKETING / PROGRAM MANAGEMENT: 7%



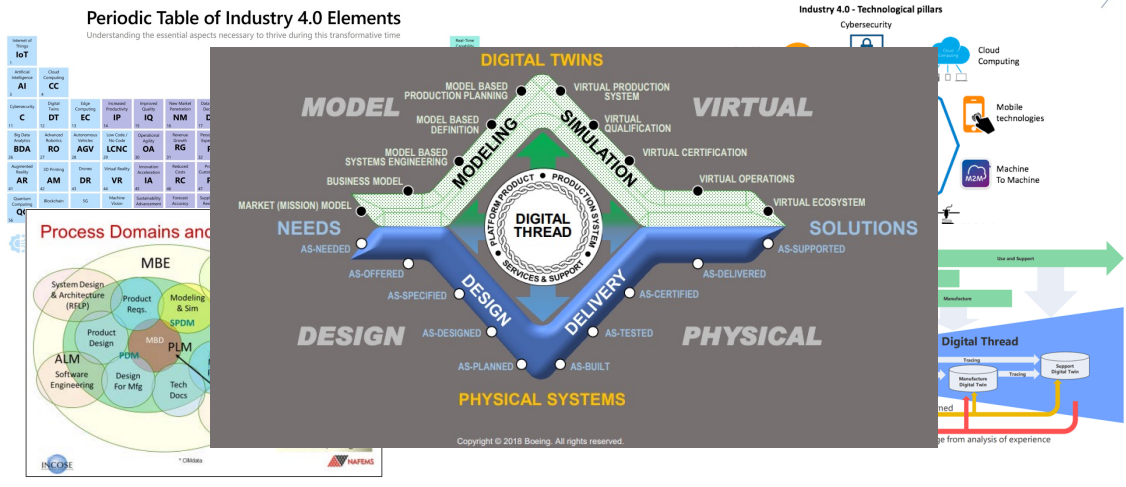
ADMINISTRATIVE AND CORPORATE SERVICES: 13%



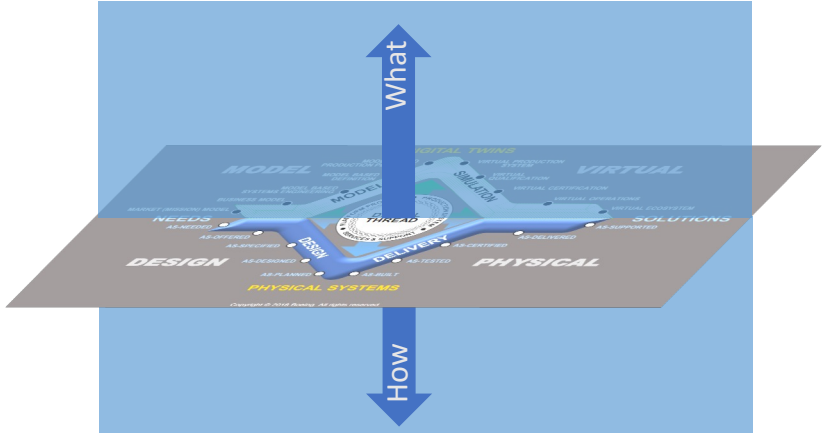
Problem: This is complex



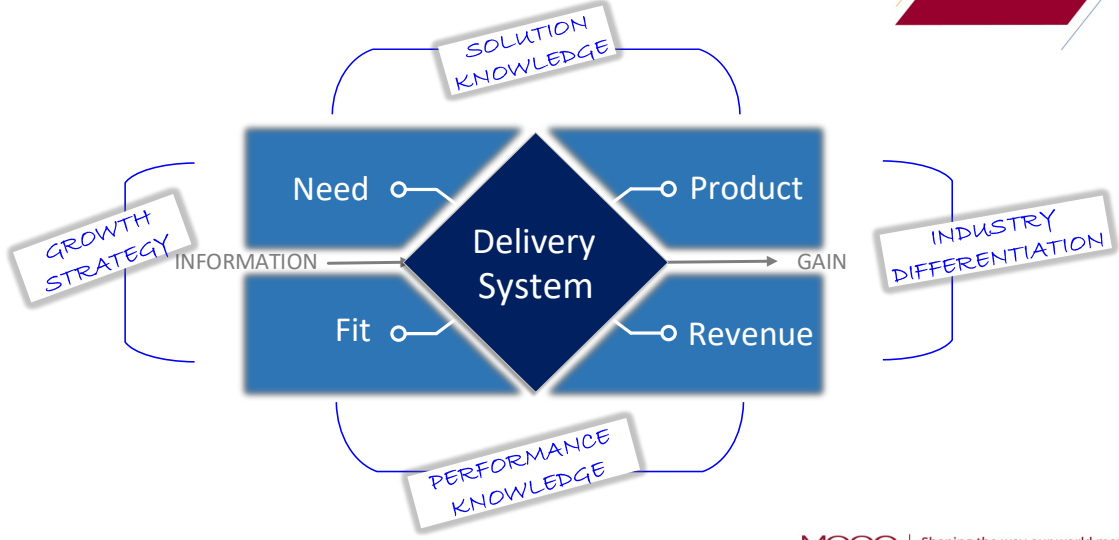
Problem: This is complex



The enterprise axis



The enterprise delivery system

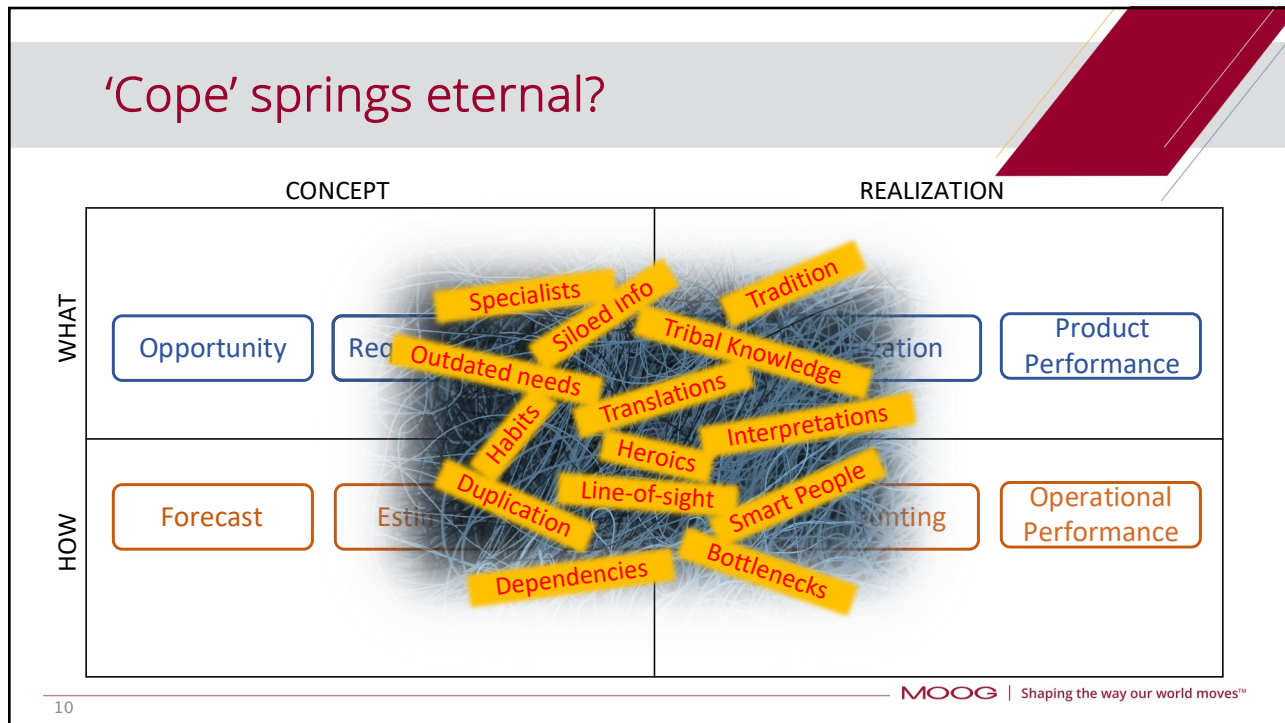
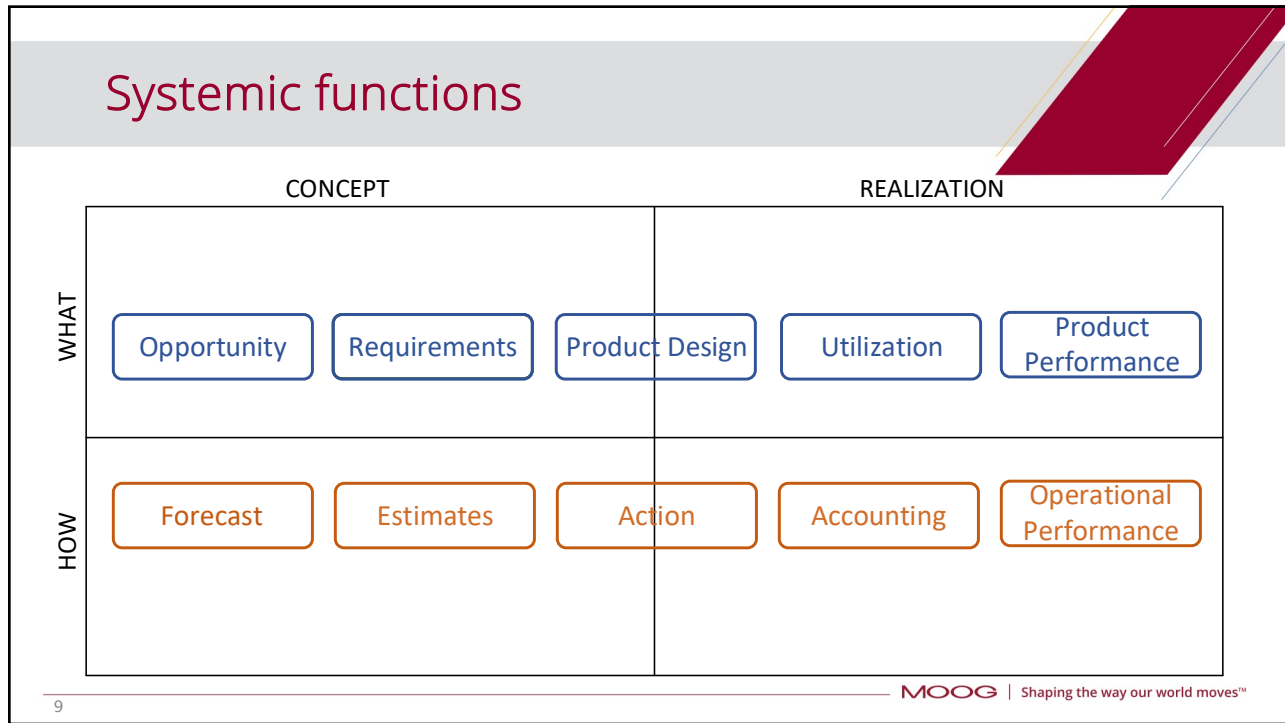


7

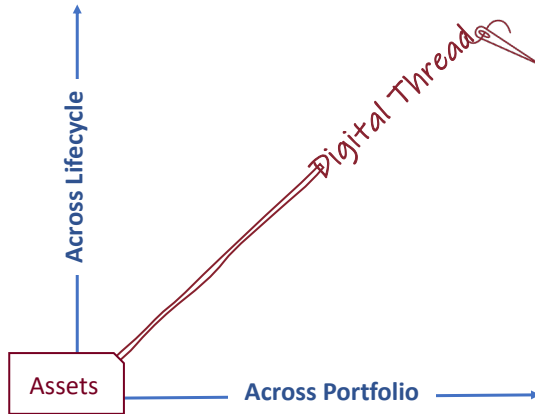
What's inside the box?

	CONCEPT	REALIZATION
WHAT	Need	Product
HOW	Fit	Revenue

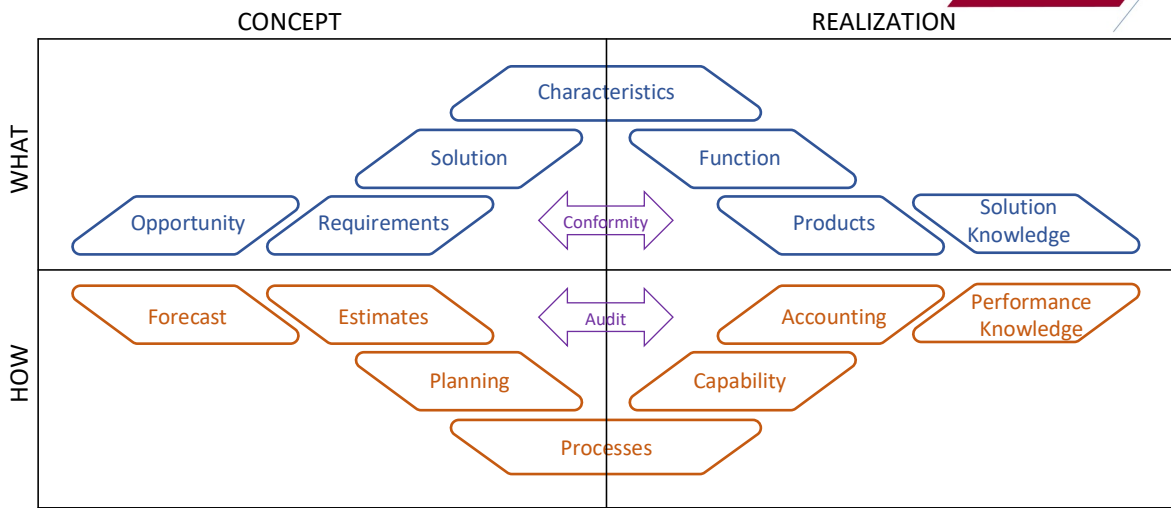
8



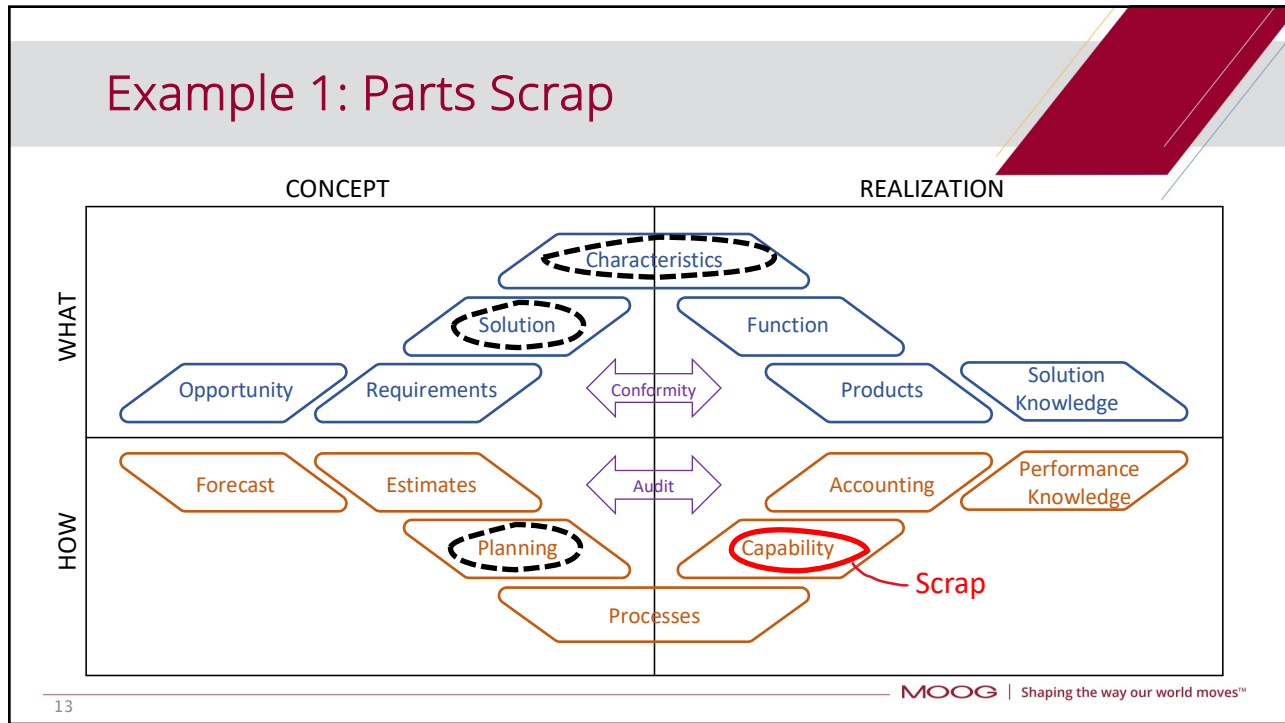
Integration of Knowledge Assets



Systemic assets



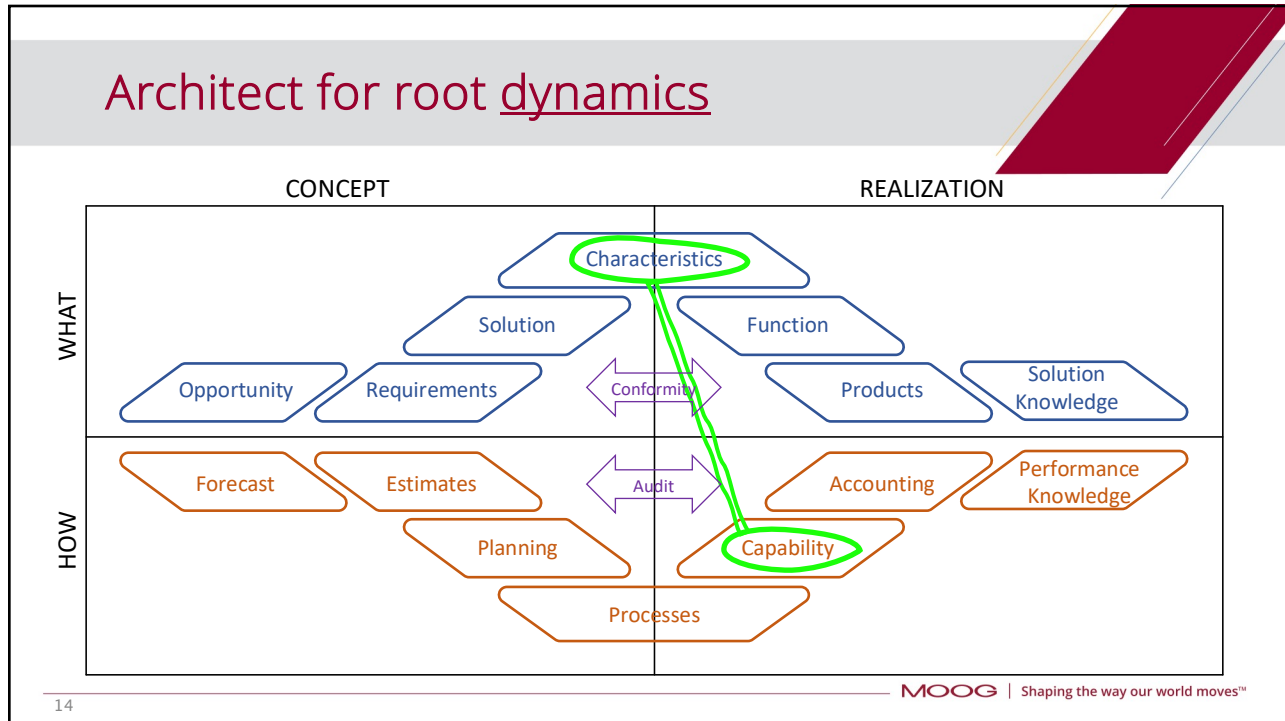
Example 1: Parts Scrap



13

MOOG | Shaping the way our world moves™

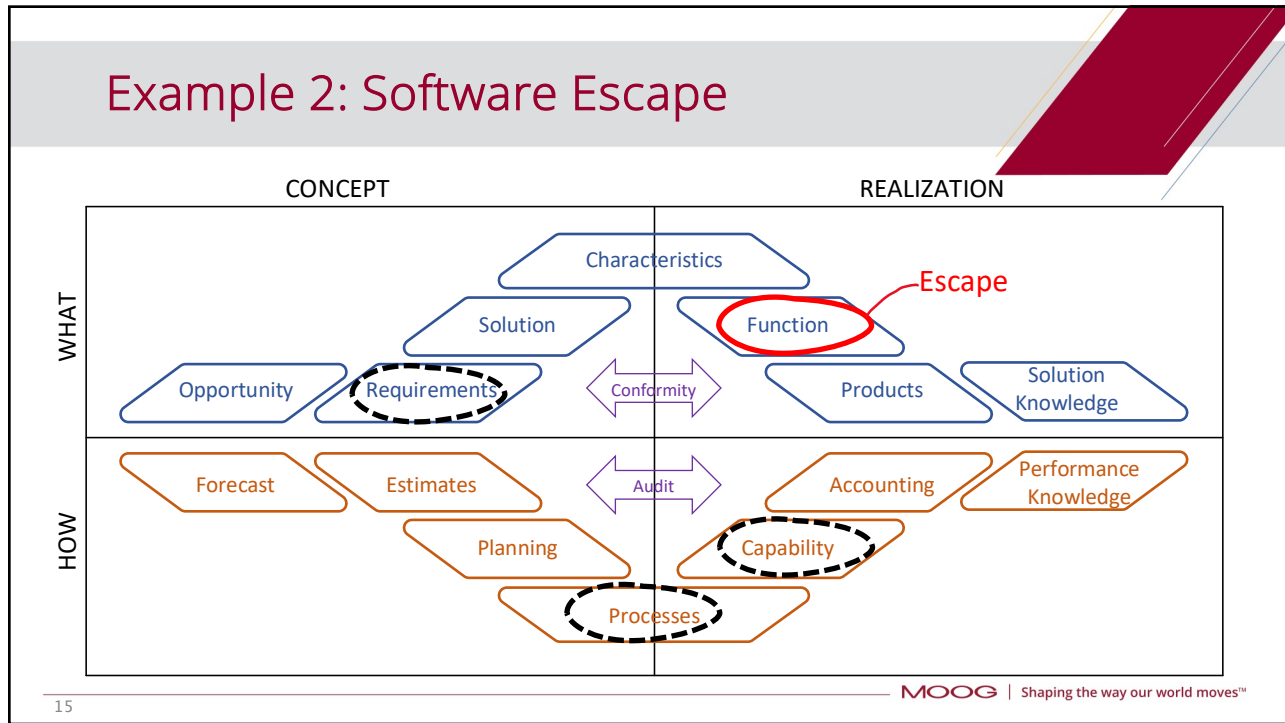
Architect for root dynamics



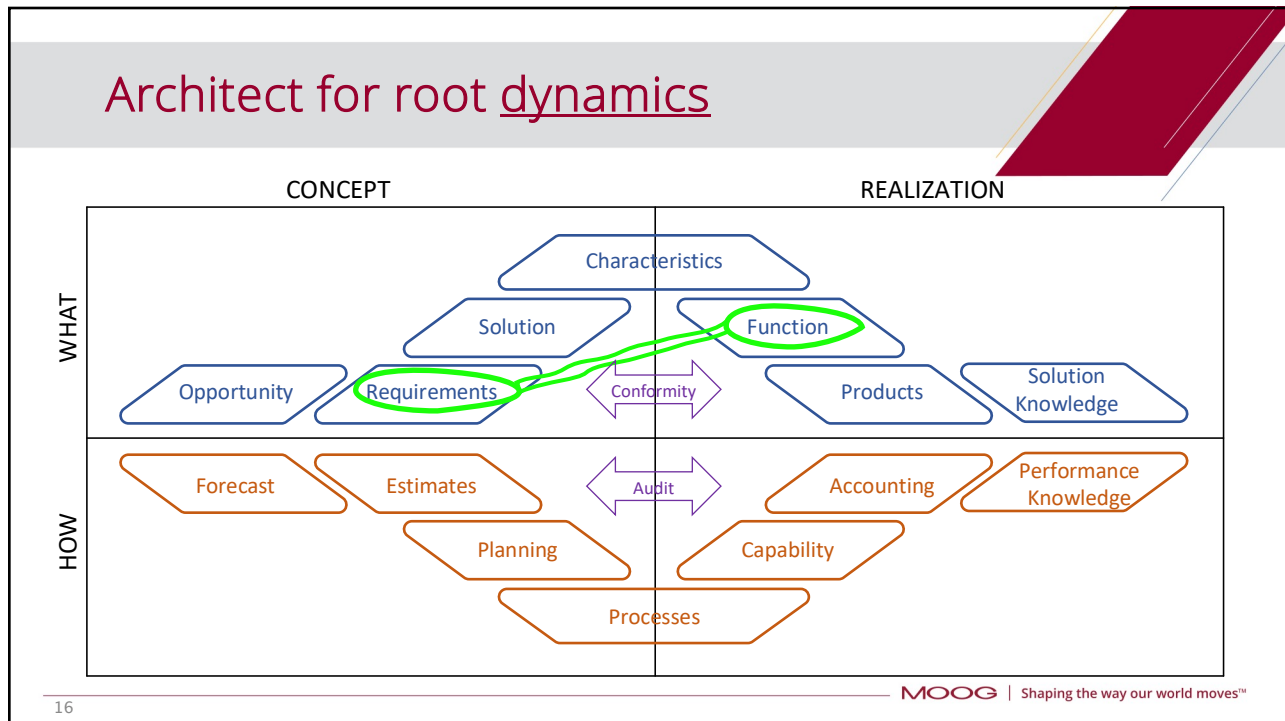
14

MOOG | Shaping the way our world moves™

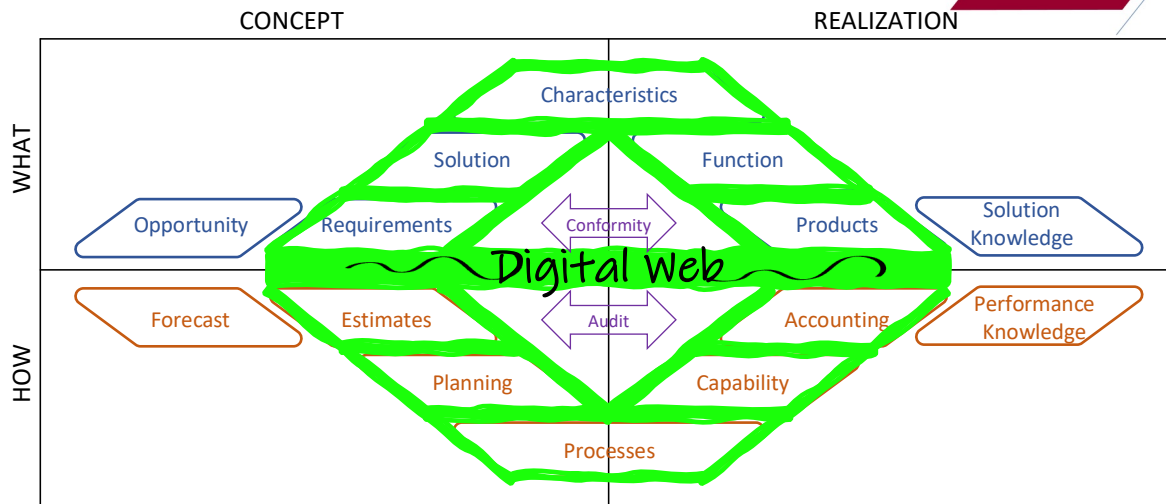
Example 2: Software Escape



Architect for root dynamics



A unifying language model



17

MOOG | Shaping the way our world moves™

Summary

- It's complex; a generational shift
- Heuristics reduce barriers
- Understand your knowledge map
- Challenge contributions from all activity sectors
- Look for opportunities to recombine existing knowledge into new insights
- Apply emerging technologies to connected knowledge models

Thank you

MOOG | Shaping the way our world moves™