



TECHNIA
ADDNODE GROUP

MBSE for extreme performance in extreme conditions

Johannes Storvik
CTO

EXPERIENCE MATTERS



KONGSBERG – From Deep Sea to Outer Space

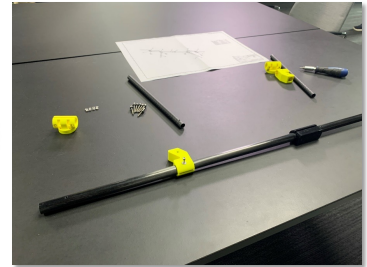
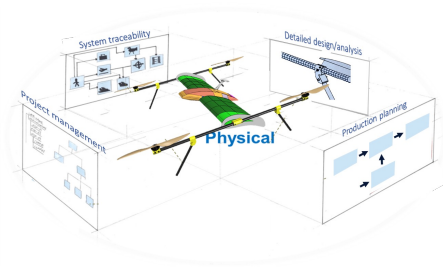
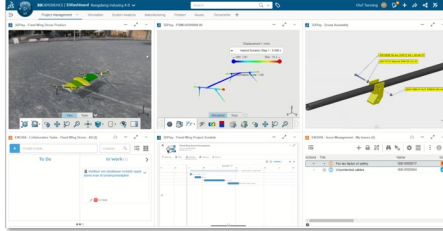
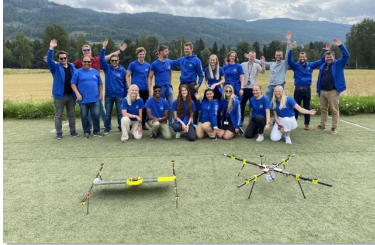
KONGSBERG

*KONGSBERG specialises in developing advanced technologies, to provide **extreme performance for extreme conditions**, operating from the depths of the sea; to outer space; to the digital frontier.*

TECHNIA
ADDNODE GROUP

2

«Local Hawk» - Showcasing MBSE

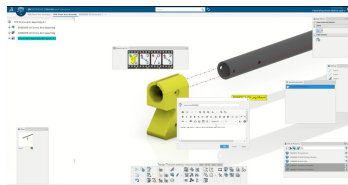
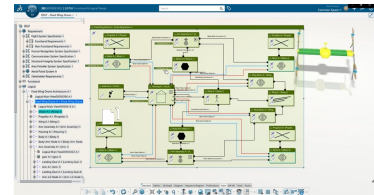


TECHNIA
ADDNODE GROUP

EXPERIENCE MATTERS

3

Working Model-based Throughout the Lifecycle

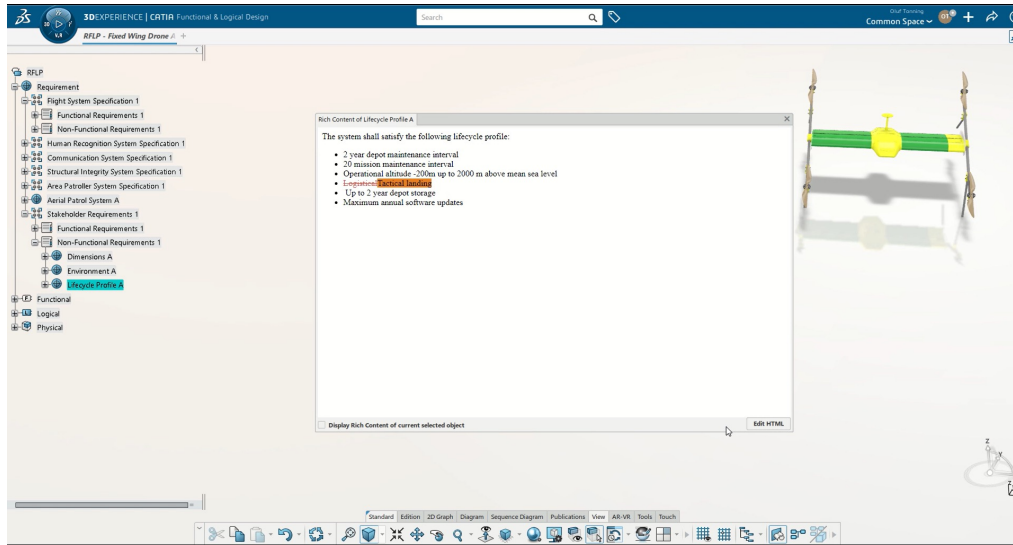


TECHNIA
ADDNODE GROUP

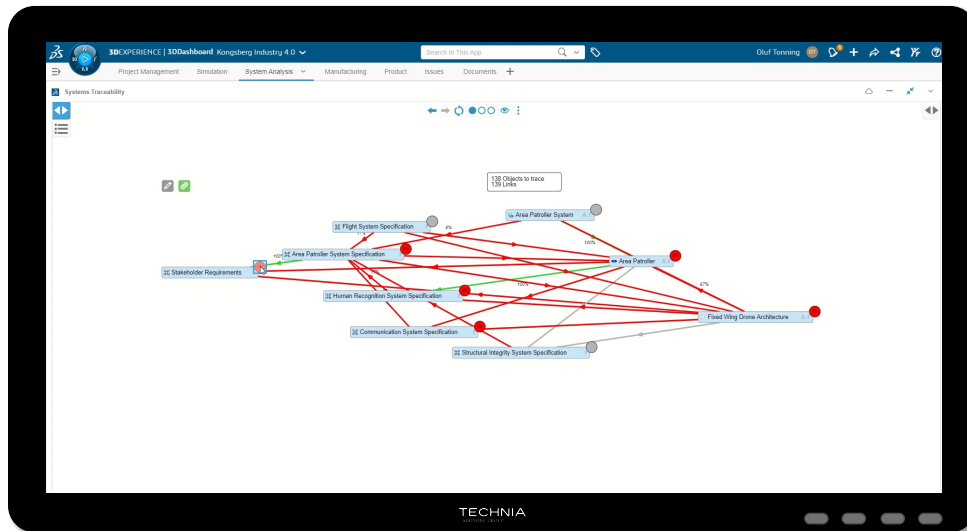
EXPERIENCE MATTERS

4

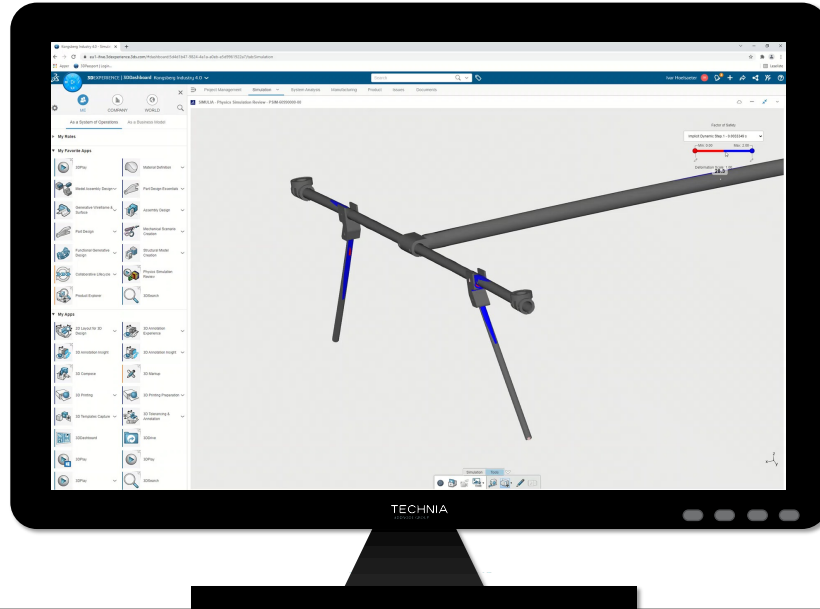
New Requirement: «Tactical Landing»



What is the Impact of Higher Landing Speed?



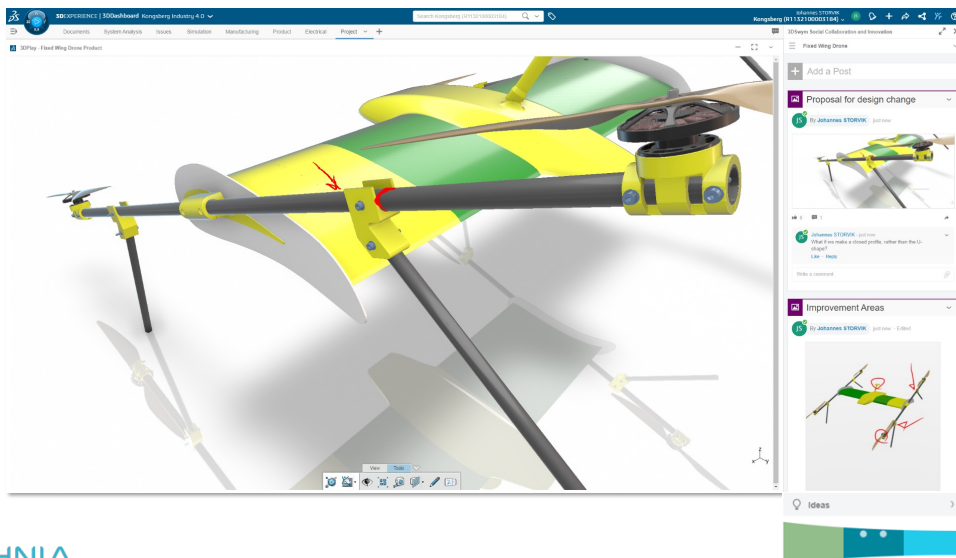
Can the Landing Gear Handle the New Load?



TECHNIA
ADDNODE GROUP

7

Ideation: How to Improve the Joint?

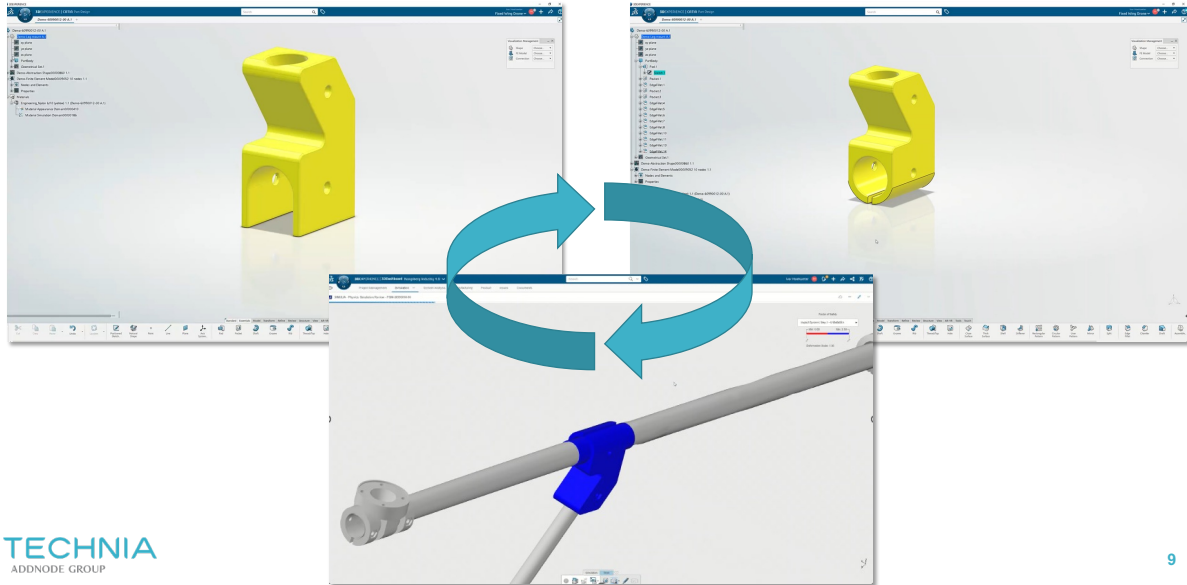


TECHNIA
ADDNODE GROUP

EXPERIENCE MATTERS

8

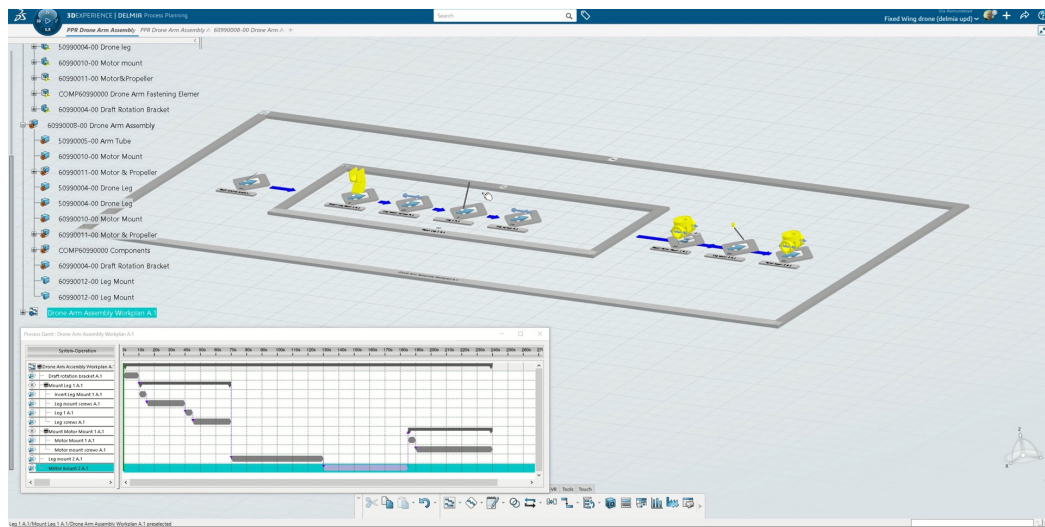
Improving and Verifying the Joint Design



TECHNIA
ADDNODE GROUP

9

Update Manufacturing Plan

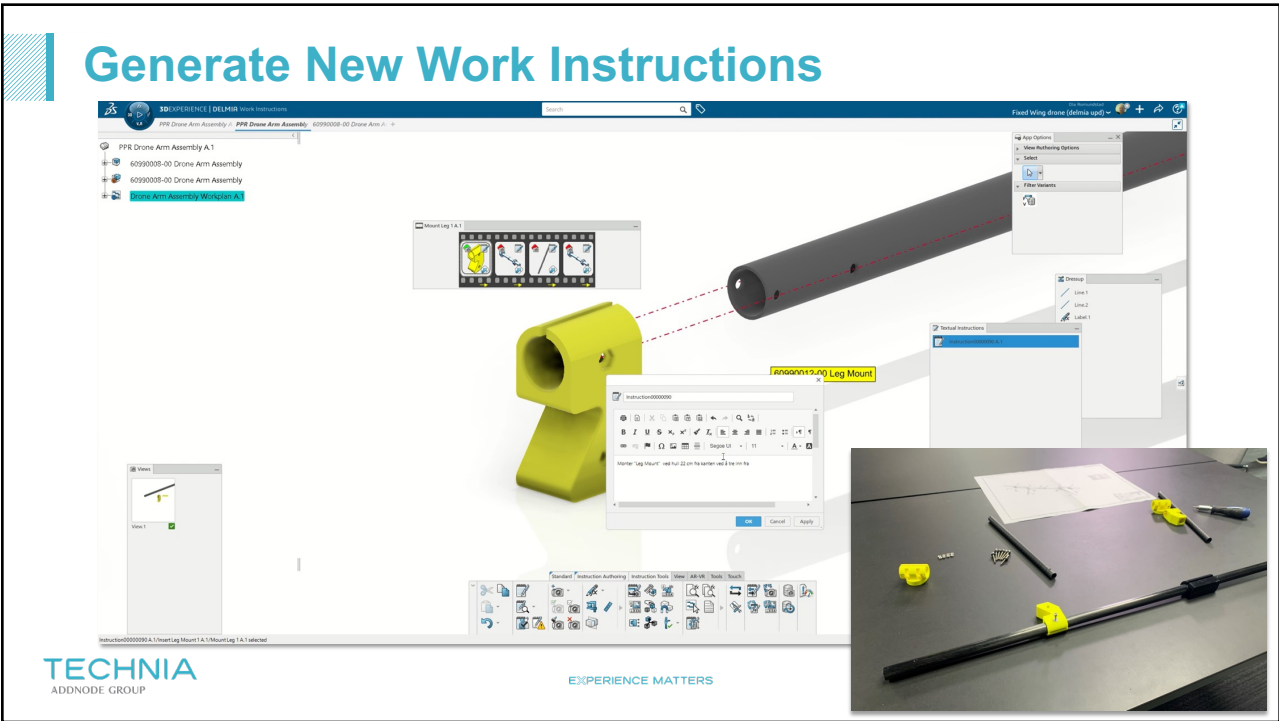


TECHNIA
ADDNODE GROUP

EXPERIENCE MATTERS

10

Generate New Work Instructions



Interactive Work Instructions for the Shop Floor



Summary: Benefits of Working Model-based

- ✓ Significantly reduce number of drawings and documents
- ✓ Speed up design iterations
- ✓ Respond quickly to changing requirements
- ✓ Ensure full traceability
- ✓ Attract the next generation of engineers



Watch the full story on YouTube

TECHNIA
ADDNODE GROUP

EXPERIENCE MATTERS

13

YOUR PATH TO DIGITAL CONTINUITY
AND MODEL-BASED ENGINEERING

@johannes.storvik@technia.com

TECHNIA
ADDNODE GROUP