

PLM Road Map™ EMEA & PDT Europe 2022
Digital Transformation and PLM – a call for PLM professionals to re-define and re-position the benefits and value of PLM
18 & 19 October

CIMdata eurostep


18TH OCT 2022

PLM's Role in Unifying an Organization's Product Data Quest
PLM Road Map™ EMEA & PDT Europe 2022


ABB

—
Agenda


- Introduction
- ABB Process Automation
- Product Data – Quest for unification
- Driving Product Data transformation
- Embedding PLM into organization's fabric
- Our Way forward



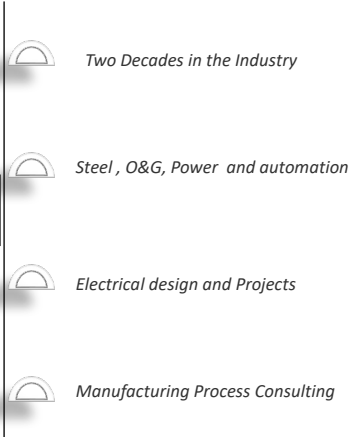
Samrat Chatterjee
Business Process Manager – Product Lifecycle Management, ABB PA – Process Control Platform




*Electrical Engineering
Masters in operations management*



*Part of ABB Process Automation since Jan 2020
Responsible for Defining and Realizing the PLM function within the Division*



- Two Decades in the Industry*
- Steel, O&G, Power and automation*
- Electrical design and Projects*
- Manufacturing Process Consulting*

©ABB | 





ABB Process Automation
Writing the future of safe, smart and sustainable operations



- 125+ years automation expertise
- #1 in DCS and process automation
- Largest installed base globally
- 40,000 connected systems
- 40,000,000 connected devices

Our recipe for success

Safer, smarter and more sustainable operations

Pioneering technology



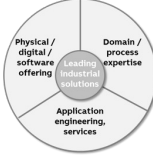
#1 in DCS for more than 20 consecutive years
125+ years in automation
Continuous innovation
 Digital

Domain expertise



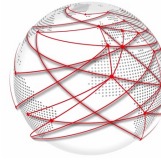
Enabling customers to realize most complex projects and run mission critical, real-time operations
Strong position in industry-specific products

Solutions-oriented business model



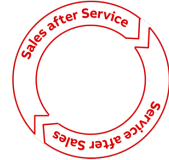
Channel to market for ABB products
ABB Ability™ digital solutions

Vast global footprint



Largest service footprint
 Presence in **100+** countries
24/7 ABB Ability™ Collaborative Operations™

Sales after Service, Service after Sales

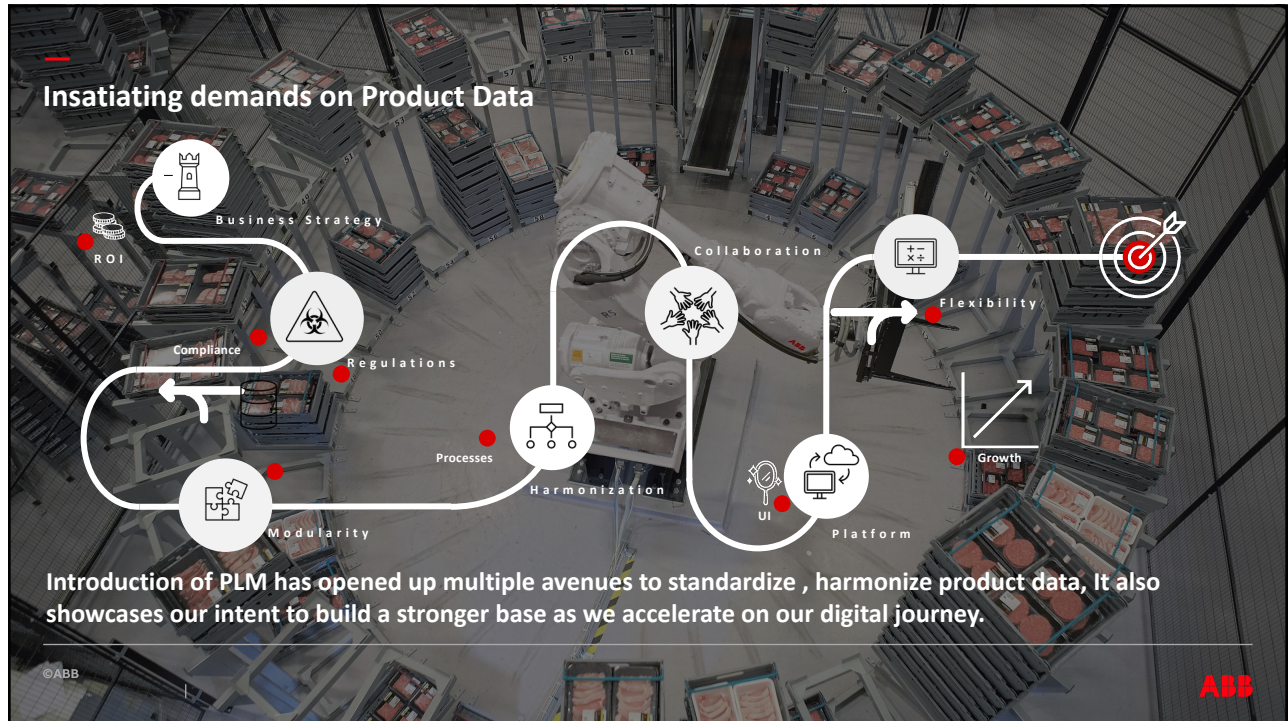


Largest installed base
 ~**40,000** connected systems
 ~**40,000,000** connected devices

©ABB



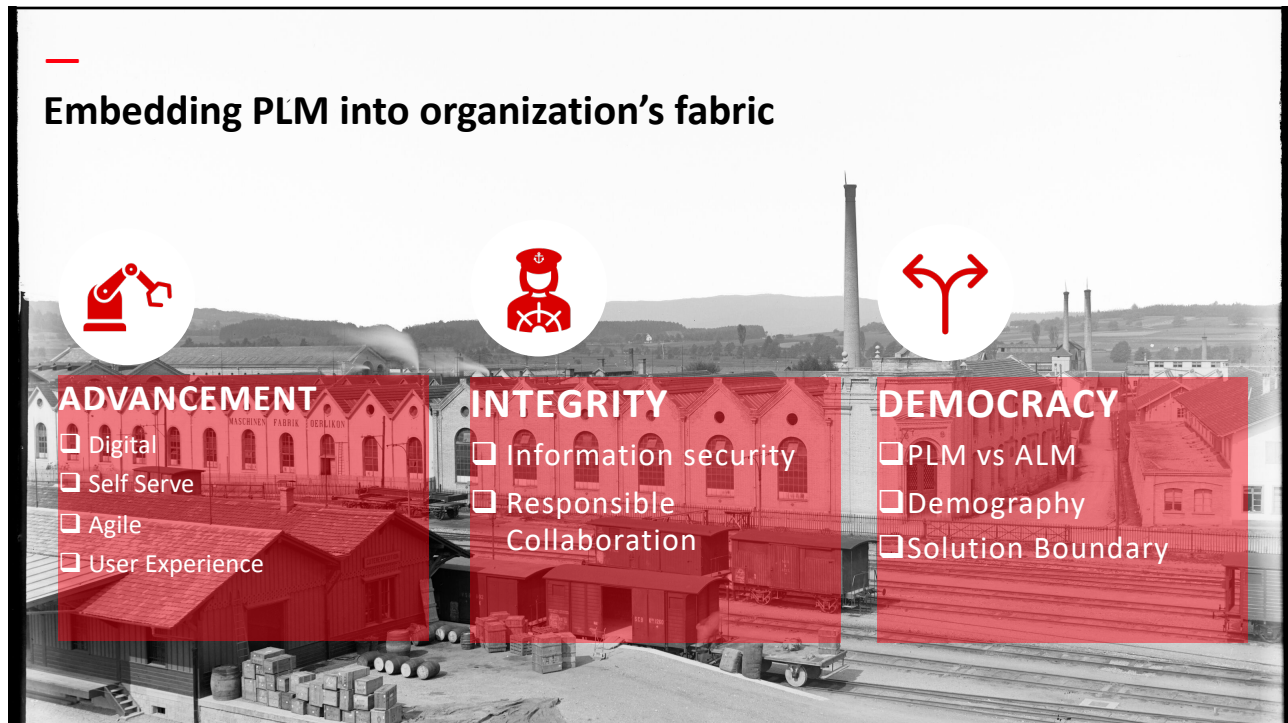
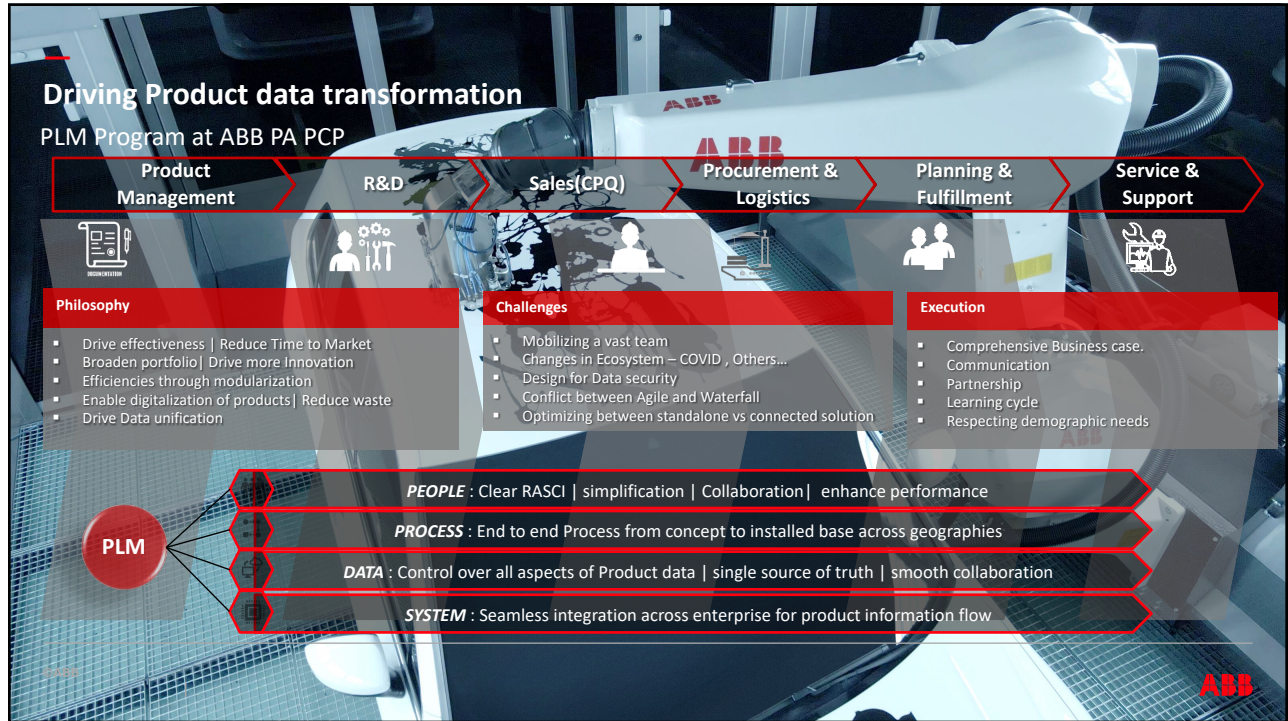
Insatiating demands on Product Data



Introduction of PLM has opened up multiple avenues to standardize , harmonize product data, It also showcases our intent to build a stronger base as we accelerate on our digital journey.

©ABB





—
Our Way Forward

-  Leverage agile frameworks to deliver quick results
-  Stronger collaboration with Technology, execution and Organization change
-  Continous Improvement and Communication



